

Step #1- Working with the laser cut appliqués in Paradise in Blooms has been a delight! Thought I would share the applique techniques I learned from Judy last year in a 4 day applique-only retreat. Here's the laser cut piece with a finished piece beside it.



Step #2 - Shiny side up, score the shiny paper with a pin or scissor blade



Step#3 - Peel the shiny paper off



Step #4 - When the shiny paper is removed, the applique will stick to the wrong side of the fabric



Step #5 - Trim the fabric "about" 1/4 inch from the applique



Step #6 - Clip inside curves with scissors.. but not all the way up to the applique paper, or you'll have "fuzzies". (Ask me how I know?!?). Just inside curves, not outside.



Step #7 - Next step requires these tools, and one more...



Step 8A - A tray! Thanks to the friend who brought Christmas cookies last Christmas!



Step 8B - Use the purple thang to fold down and glue your seam allowance



Step 8C -Use the UHU stick on the seam allowance of the fabric.

Step #9 - Fold down and glue the tip



Step #10 - Inside curve looks like this



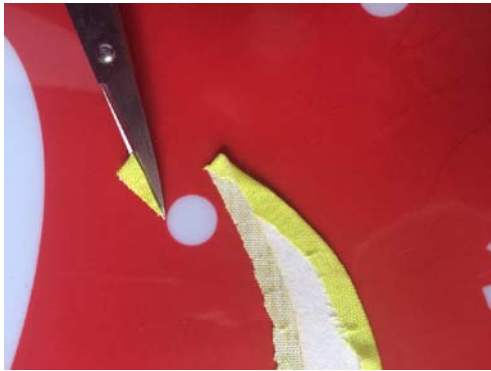
Step #11 - Your tip will look like this



Step #12 - Clip off the tip, continuing the line of the applique (see placement of scissors)



Step #13 - This is all that you trim



Step #14 - Fold over the other side of the tip





Step #15 - From the right side, you can see where it needs trimmed



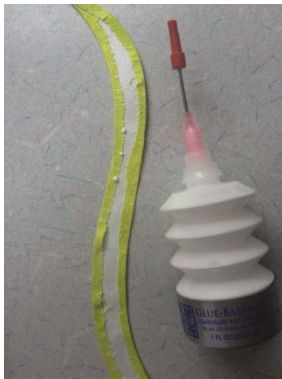
Step #16 - Trim your tip for the second time.



Step 17 - Just a little clip!



Step #18 - Little dots of Roxanne's glue baste will attach the applique to the quilt... Don't put them on the edge or they'll break your 60 Microtex needle!



Step #19 - Tiny zig-zag stitches (shown here in a contrasting thread)



Step #20 - Here's the zig-zag from the back



Step #21 - Judy's favorite thread is #100 silk to match the color of the applique...same thread in top and bobbin.



Step #22 – Ta Da

