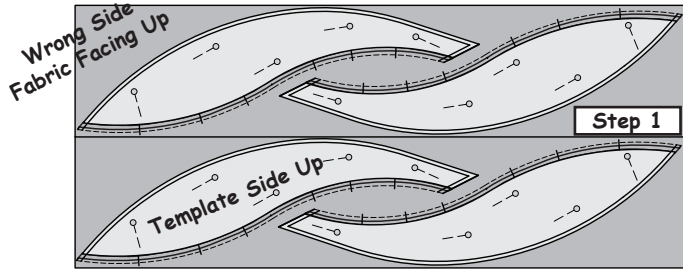
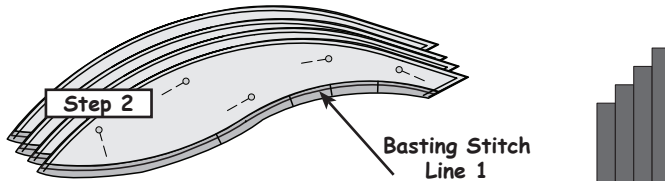


## Leaf Unit FL-7 Accent: Bag #7

**Step 1:** Position the (4) *Leaf Unit FL-7 Accent* pieces onto the fabric as shown. Make sure to position the units facing right-side-up onto the wrong-side of the fabric. These pieces are directional. If you cut them out wrong, they will be backward and you will need to start over. Glue should be placed around the edge on the backside of the paper. Several flower pins are used to keep each of the papers attached to the fabric as you cut around each piece.



**Step 2:** One edge of the leaf is dashed and the rest is solid. With a rotary cutter, carefully cut out each foundation unit. A perfect cut is needed on the edges with the solid line. On the dashed edge, the fabric does not need to be trimmed perfectly because this edge will be trimmed a second time in these directions.

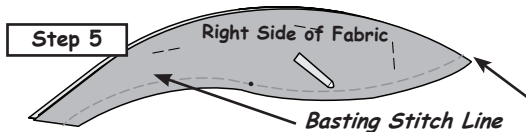


**Step 3:** After the pieces are cut out, a basting stitch is sewn along the bottom edge of the template on the line referenced as Basting Stitch Line 1. Fold back the paper along the edge of the basting stitch. You may need to tear the paper in a couple places to get it to fold back. Use the rotary cutter to trim off the excess fabric along the basting stitch line.

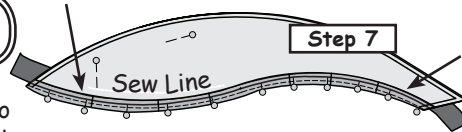
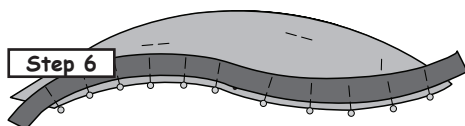
**Step 4**

**Step 4:** In Bag #7, you should have (4) 1-1/2" by 30" strips cut from Fabric #11.

**Step 5:** Flip the paper over and position the leaf fabric-side-up. Locate the stitches along the *Basting Stitch Line* sewn in Step 3 and the transition point along the bottom of the leaf.

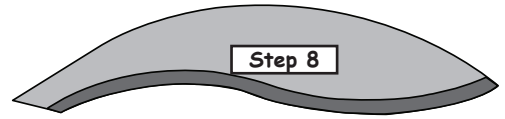


**Step 6:** Use your glue pen and run a small strip of glue (about 1/4" wide) along the *Basting Stitch Line* on the *right-side* of the fabric. Using the *Basting Stitch Line* as your guide, pin and glue the edge of the bias strip along the *Basting Stitching Line*, fabrics facing *right-sides-together*.



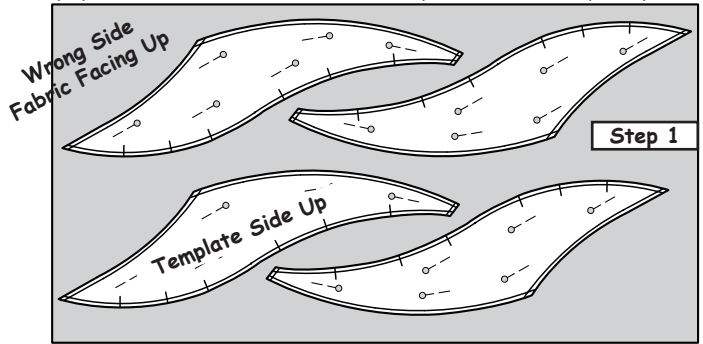
**Step 7:** Flip the leaf paper-side-up. The pieces are stitched together on the sew line, referenced as *Sew Line 2*.

**Step 8:** Flip each unit over, fabric-side-up and press the bias strip, leaving it flat along the bottom edge of the leaf. You may need to use a little steam to get it to lay down. Then, trim the excess fabric along the dashed line to complete the leaf.

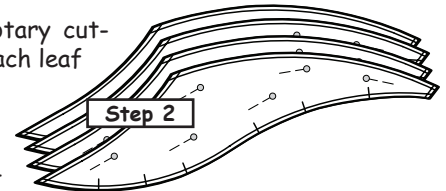


## Leaf Template FL-8: Bag #7

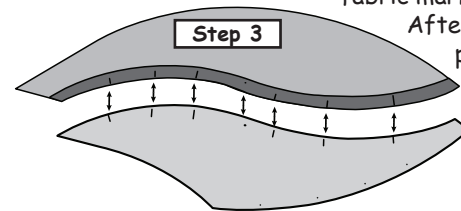
**Step 1:** Position the (4) *Leaf Unit FL-8 Background* pieces onto your fabric as shown. Make sure you position the templates facing right side up on the wrong-side of the fabric. These pieces are directional as well. If you cut them out wrong, you will need to start over. Flower pins and glue should be used to keep each of the papers attached to the fabric as you cut around your pieces.



**Step 2:** Using your rotary cutter, carefully cut out each leaf template.



**Step 3:** Find the transition points and reference points on your templates. These should be transferred onto your fabrics with a fabric marking pencil at this time.



After the marks are in place, you can remove the paper templates from these pieces.

The foundation paper

## Removing the Foundation Paper

should be removed from each unit before you complete any assembly of the quilt. But, before you remove any paper, you need to transfer the registration points onto the fabrics. You will need a good marking pencil used for fabric to mark the registration points. I would recommend that you remove the foundation paper from each unit just prior to sewing the units together. Before you get started with the curved piecing, you may want to refer back to the *\*General Instructions\** on pages 7 & 8 for the information on removing the foundation paper and marking the registration points.