

Accent Colors #1, #2, #3: Place this fabric with Bag #2, Unit PDS.

Accent Colors #4: Place this fabric with Bag #4 Unit PDA.

Accent Colors #5, #6, #7, #8: Place this fabric with Bag #1, Unit P.

Background Fabric #1: Cut (16) 12-1/2" by 42" strips and place with Bag #1, Unit P.

Background Fabric #3: Cut (4) 5-3/4" by 42" strips and place in Bag #2 with Unit PDS.

Background Fabric #2: Place this fabric in Bag #4 with Unit PDA.

Background Fabric #1: Place 1-1/3 yds with Bag #3, Unit PDB.

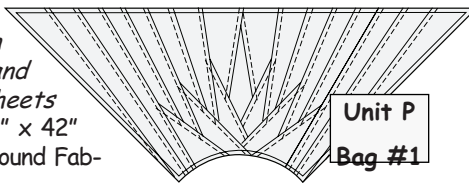
Background Fabric #1: Place 2-1/2 yds with Bag #5, Unit E.

Unit P: Cutting Instructions, Bag #1:

Unit P Background Template Layout Sheet

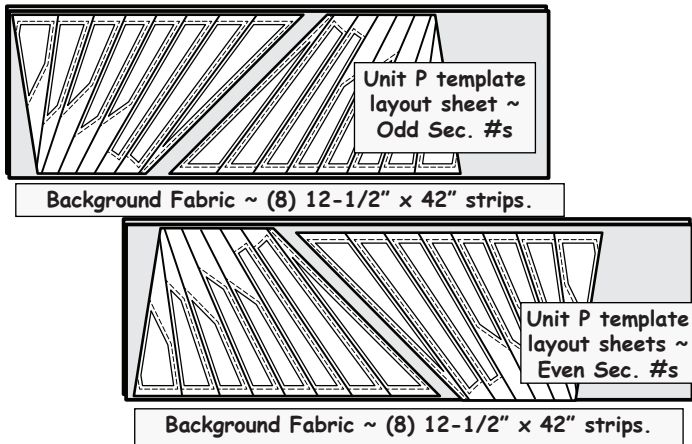
Background Fabric #1

With Bag 1, you will find the *foundation papers, templates, and template layout sheets* along with the 12-1/2" x 42" strips cut from Background Fabric #1.

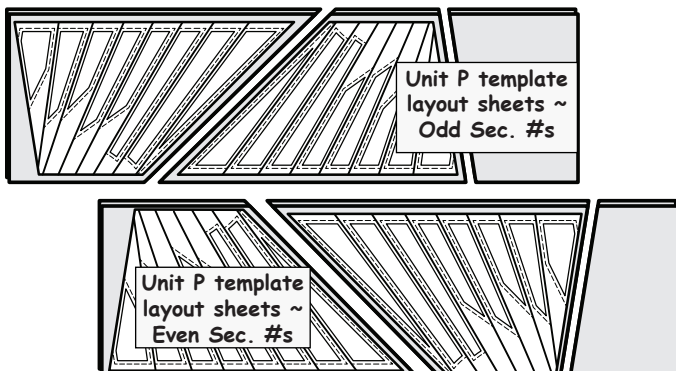


Stack the 12-1/2" x 42" Background Fabric #1 Strips into two stacks of (8) strips.

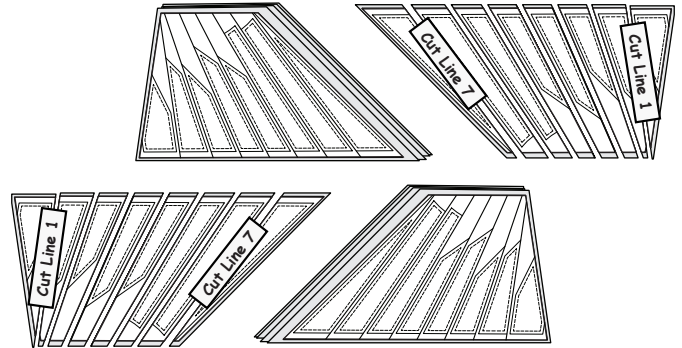
Step 1: Place (2) Unit P Background Template Layout Sheets on top of each strip as shown.



Step 2: Cut the strips in between each set of template layout sheets on both strip sets.



Step 3: Trim off the excess fabric along the edge of each template layout sheet in all (4) stacks and place the excess fabric into Bag #3. Begin with Cut Line 1 on each layout sheet and slice through the template layout sheets and fabric at the same time, finishing with Cut Line 7.



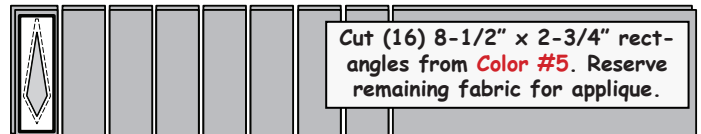
Step 4: Using paper clips, clip the paper templates labeled with each section number to the fabrics stacked beneath them and place them into Bag #1. Eight fabric pieces should be clipped to each set of template pieces. You should have 16 fabric pieces for each section number. Keep the template pieces for each section together and arrange them in numerical order before clipping them and placing them back into Bag 1.

Template P-1, Accent Color #5

Step 5: Remove Accent Color #5 and the templates for Template P-1 from Bag #1.

Step 6: Cut (2) 8-1/2" by 42" strips from Accent Color #5. Subcut (8) 2-3/4" x 8-1/2" rectangles from each strip for a total of (16) pieces.

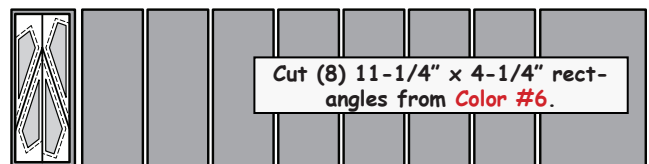
Step 7: Stack and clip the (16) rectangles to the Template P-1 pieces, Place the pieces back into Bag #1. Set the remaining fabric aside in Bag #6 to reserve for the applique.



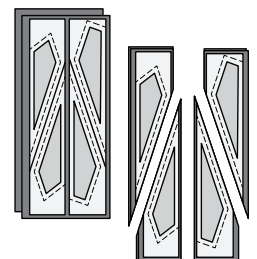
P-4/P-5 Template Layout Sheet, Accent Color #6

Step 8: Remove Accent Fabric #6 and the (2) P-4/P-5 Template Layout Sheets from Bag #1.

Step 9: Cut (1) 11-1/4" by 42" strip from Accent Color #6. Subcut the strip into (8) 11-1/4" x 4-1/4" rectangle. Set the remaining fabric in Bag #6 to reserve for the applique.

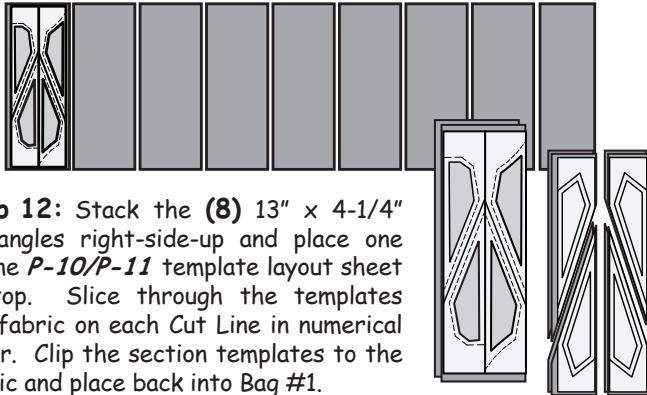


Step 10: Stack the (8) 11-1/4" x 4-1/4" rectangles, right-side-up, and place one of the P-4/P-5 template layout sheet on top. Cut through the template layout sheet and fabric on the cut lines, in numerical order. Using a paper clip, clip the paper template to each stack of fabric and place back into Bag #1.



P-10/P-11 Template Layout Sheet, Accent Color #7

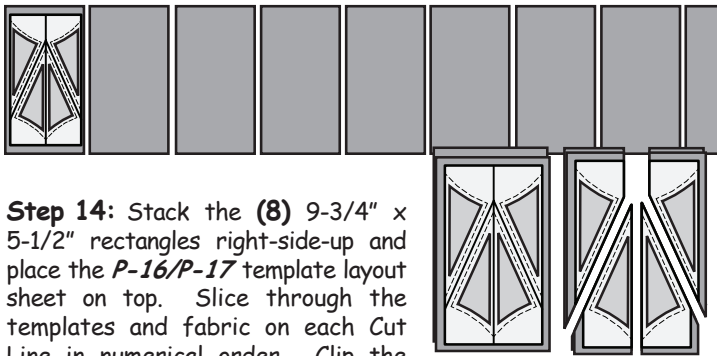
Step 11: Remove Accent Color #7 and the *P-10/P-11* template layout sheets from Bag #1. Cut (1) 13" by 42" strip from Accent Color #7. Subcut the strip into (8) 13" x 4-1/4" rectangles. Set the remaining fabric in Bag #6 to reserve for the applique.



Step 12: Stack the (8) 13" x 4-1/4" rectangles right-side-up and place one of the *P-10/P-11* template layout sheet on top. Slice through the templates and fabric on each Cut Line in numerical order. Clip the section templates to the fabric and place back into Bag #1.

P-16/P-17 Template Layout Sheet, Accent Color #8

Step 13: Remove Accent Color #8 and the *P-16/P-17* template layout sheets from Bag #1. Cut (1) 9-3/4" by 42" strip from Accent Color #8. Subcut the strip into (8) 9-3/4" x 5-1/2" rectangles. Set the remaining fabric in Bag #6 for the applique.

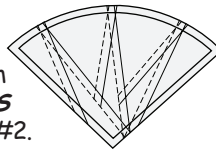


Step 14: Stack the (8) 9-3/4" x 5-1/2" rectangles right-side-up and place the *P-16/P-17* template layout sheet on top. Slice through the templates and fabric on each Cut Line in numerical order. Clip the templates to the fabric and place back into Bag #1.

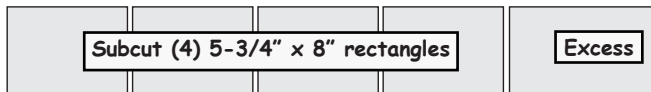
UNIT PDS: Cutting Instructions for Bag #2

PDS Background Fabric #3

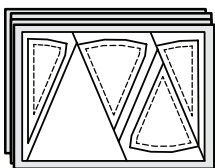
Step 1: Remove the (4) strips cut from Background #3 and both the *Unit PDS Background* template layout sheets from Bag #2.



Step 2: Subcut (4) 5-3/4" x 8" rectangles from each strip. Place the remaining fabric in Bag #3.



Step 3: Stack the 5-3/4" x 8" rectangles right-side-up into two stacks of (8) pieces. Place one *Unit PDS Background* template layout sheet on top each stack.



Step 4: Slice through the templates and fabric on each Cut Line in numerical order. Clip the (16) fabric pieces for each section together and place back into Bag #2. Discard the excess pieces.



Unit PDS Spikes, Accent Colors #1, #2, #3

Step 5: Remove Template PDS-2 from Bag #2. Cut (3) 1-3/4" by 42" strips from each Accent Color #1, #2, and #3.

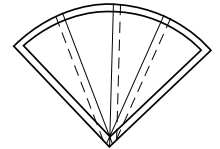


Step 6: Stack the three strips in each color separately and subcut (6) 6" x 1-3/4" rectangles from each strip.

You will have (18) pieces from each color. Only (16) of each color are required to complete the quilt. Clip (16) pieces of each color group together and place the three sets back into Bag #2.

UNIT PDB: Cutting Instructions for Bag #3

Background Fabric #1

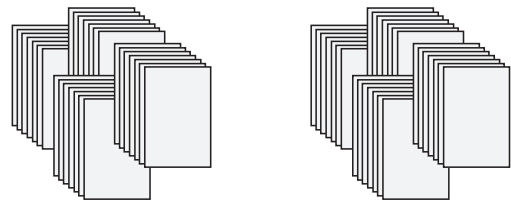


Step 1: (72) 6" x 4" rectangles are cut from Background Fabric #1. These pieces can be cut from the left over fabric pieces in Bag #3. When you run out of the cut pieces the remaining rectangles can be cut from the 6" by 42" strips.

Step 2: Stack the strips *right-sides-up* and subcut the remaining 6" x 4" rectangles from your strips.

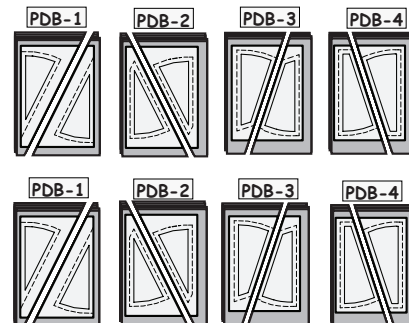


Step 3: When you reach 72 pieces, restack the pieces into (8) stacks of (9) 6" x 4" rectangles and set aside.



Step 4: Remove the *PDB-1, PDB-2, PDB-3,* and *PDB-4* Template Layout Sheets from Bag #3 and place one layout sheet on each stack of 6" x 4" rectangles.

Step 5: Cut each stack on Cut Line 1 and clip the paper templates to the pile of fabric.

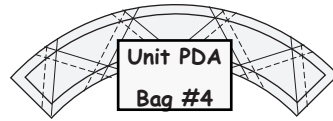


Step 6: Clip the pieces for each layout sheet into one set and place sets back into Bag #3.

Unit PDA: Cutting Instructions for Bag #4

Background Fabric #2

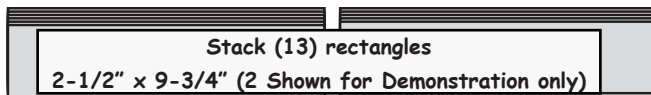
Step 1: Remove the four *Unit PDA Background* template layout sheets from Bag #4. Cut (13) 2-1/2" x 42" strips.



Step 2: Stack the strips right-side-up and subcut into (4) stacks of (13) 2-1/2" x 9-3/4" rectangles.



Step 3: Restack the pieces into (4) stacks of (13) rectangles.



Step 4: Place one of the *Unit PDA Background* template layout sheets onto each of the (4) stacks.



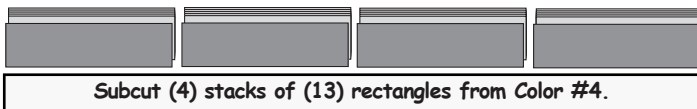
Step 5: Slice through the templates and fabrics on Cut Lines 1-4. Clip the section templates to each stack (keeping the section pieces grouped together) and place back into Bag #4.



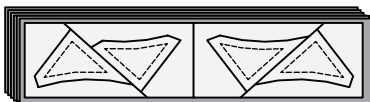
Accent Color #4

Step 6: Remove the four *Unit PDA Spike* template layout sheets from Bag #4. Subcut (13) 2-1/2" x 42" strips from Color #4.

Step 7: Stack the strips *right-side-up* and subcut into (4) stacks of (13) 2-1/2" x 9-3/4" rectangles.



Step 8: Place one *Unit PDA Spike* template layout sheet onto each stack (graphic shows one stack for demonstration purposes only).



Step 9: Slice through the templates and fabrics on Cut Lines 1-3. Complete the cutting on all four stacks. Clip the templates for each section together and place back into Bag #4.

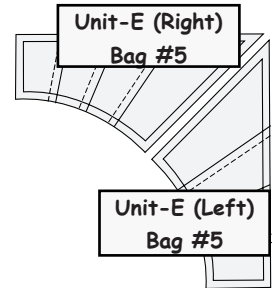


Place all leftover fabric from Color #4 into Bag #6, which will be reserved for the applique in the quilt.

UNIT E: Cutting Instructions for Bag #5

Background Fabric #1

Cut the following strips from Background Fabric #1 and place with each *Unit E* Template Layout Sheet:



Cut (6) 4-1/2" by 42" strips. Place (3) strips each with the E1(Left) and E1(Right) Template Layout Sheets.

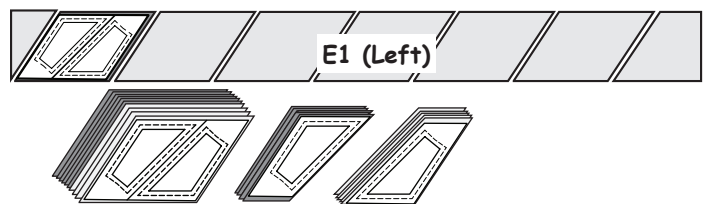
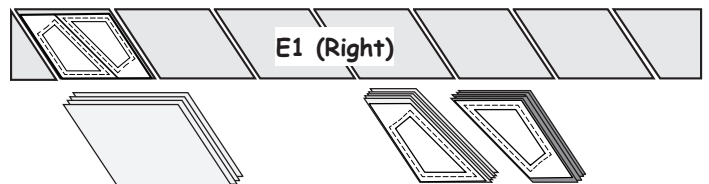
Cut (6) 3-3/4" by 42" strips. Place (3) strips each with the E2(Left) and E2(Right) Template Layout Sheets.

Cut (4) 3-1/4" by 42" strips. Place (2) strips each with the E3(Left) and E3(Right) Template Layout Sheets.

Cut (4) 3" by 42" strips. Place (2) strips each with the E4(Left) and E4(Right) Template Layout Sheets.

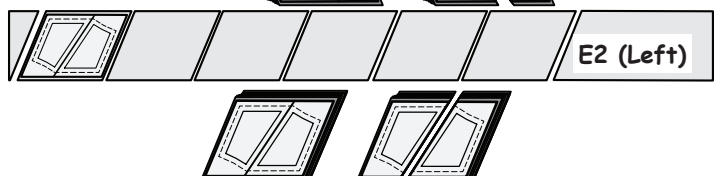
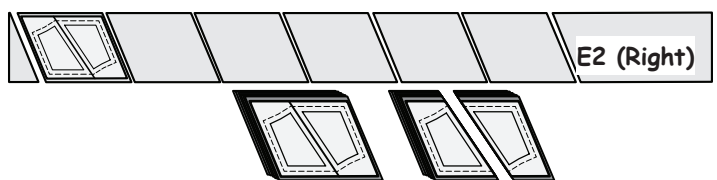
Template Layout Sheet E1 (Right and Left):

Step 1: Stack (3) 4-1/2" x 42" strips *right-sides-up*. Using template layout sheet E1 (Right) as a guide, subcut the strips into (6) parallelograms. Make two stacks of (9) parallelograms each, *right-sides-up*. Place a template layout sheet on top of each stack and cut on Cut Line 1. Clip all of E1 (Right) together and put back into Bag #5. Repeat for E1 (Left), using the other (3) strips.



Template Layout Sheet E2 (Right and Left):

Step 2: Stack (3) 3-3/4" x 42" strips right-sides-up. Using template layout sheet E2 (Right) as a guide, subcut the strips into (6) parallelograms. This yields the 18 pieces needed for the pattern. Make two stacks of (9) parallelograms each, right-sides-up. Place an E2 template layout sheet on top of each stack and cut on Cut Line 1. Clip all of E2(Right) together and put back into Bag #5. Repeat for E2 (Left), using the other (3) strips.



Cactus Rose Yardage

Cactus Rose was designed for foundation paper piecing. Instructions have been written for any level quilter, beginners to advanced. This pattern includes instructions for the 70" by 70" quilt shown on the cover. Extra foundation papers can be purchased to increase the size to a 99" by 99" quilt. If you are interested in the larger quilt, you will need to purchase extra foundation papers which can be found on our webpage at www.quiltworx.com.

Unit P (Four Cactus Flower Spikes)

Background Fabric #1: Cream, 5-7/8 Yds, Bag #1 (Unit P)
 Accent Color #5: Purple, 5/8 Yd, Bag #1 (Unit P)
 Accent Color #6: Purple, 5/8 Yd, Bag #1 (Unit P)
 Accent Color #7: Purple, 5/8 Yd, Bag #1 (Unit P)
 Accent Color #8: Purple, 5/8 Yd, Bag #1 (Unit P)

Unit PDS (Four Center Stars)

Background Fabric #3: Cream, 3/4 Yd, Bag #2 (Unit PDS)
 Accent Color #1: Blue, 1/4 Yd, Bag #2 (Unit PDS)
 Accent Color #2: Blue, 1/4 Yd, Bag #2 (Unit PDS)
 Accent Color #3: Blue, 1/4 Yd, Bag #2 (Unit PDS)

Unit PDA (Arcs)

Background Fabric #2: Cream, 1 Yd, Bag #4 (Unit PDA)
 Accent Color #4: Blue, 1 Yd, Bag #4 (Unit PDA)

Unit PDB (Border)

Background Fabric #1: Cream, 1-1/3 Yd, Bag #3 (Unit PDB)

Unit E (Border)

Background Fabric #1: Cream, 2-1/2 Yds, Bag #5 (Unit E)

Applique Flowers

Accent Color #5: Purple, Included Above, Bag #6 (applique)
 Accent Color #6: Purple, Included Above, Bag #6 (applique)
 Accent Color #7: Purple, Included Above, Bag #6 (applique)
 Accent Color #8: Purple, Included Above, Bag #6 (applique)
 Accent Color #9: Green, 1/2 Yd, Bag #6 (applique)
 Accent Color #10: Green, 1/2 Yd, Bag #6 (applique)

Yardage Information

Background Fabric: You have a choice with your background fabrics. You can buy **11 yards** of (1) background color or you can divide the yardage into (3) different background colors. The yardage calculations for these instructions were divided into (3) colors.

Unit P, Unit PDB & Unit E: The fabric pieces for these units are cut from Background Fabric #1.

Unit PDA: The fabric pieces for this unit are cut from Background Fabric #2.

Unit PDS: The fabric pieces for this unit are cut from Background Fabric #3.

Accent Fabrics: (10) accent fabrics were chosen for the spikes and applique pieces. Accent fabrics 5, 6, 7, & 8 were used for the cactus spikes as well as the applique flowers.

Backing and Binding: 5 Yards

© Copyright March 2013

All rights reserved. No part of this pattern can be reproduced in any form for any commercial purpose without the expressed written permission of Judy Niemeyer Quilting. The written instructions, foundation papers, graphics, and photographs for the Cactus Rose quilt were designed as a package for the purpose of retail sales and as a result fall under the protection of the federal copyright laws of the United States of America. Extra materials may be obtained from local quilt shops or directly from Judy Niemeyer Quilting.



Judy Niemeyer Quilting
 at
Quiltworx.com

E-mail: info@quiltworx.com homepage: www.quiltworx.com



Visit us on Facebook, Pinterest, Instagram, and Youtube: Quiltworx.com

Print Date: 09-26-14