

## 72" x 72" Layout Instructions

The 72" x 72" Quilt shown on the cover of the pattern requires the purchase of additional extra foundation paper packet and extra yardage (yardage information is on the back). This quilt has an even number of blocks and has a final layout that is different from the 60" x 60" Quilt. Additionally, you must change the cutting instructions as follows:

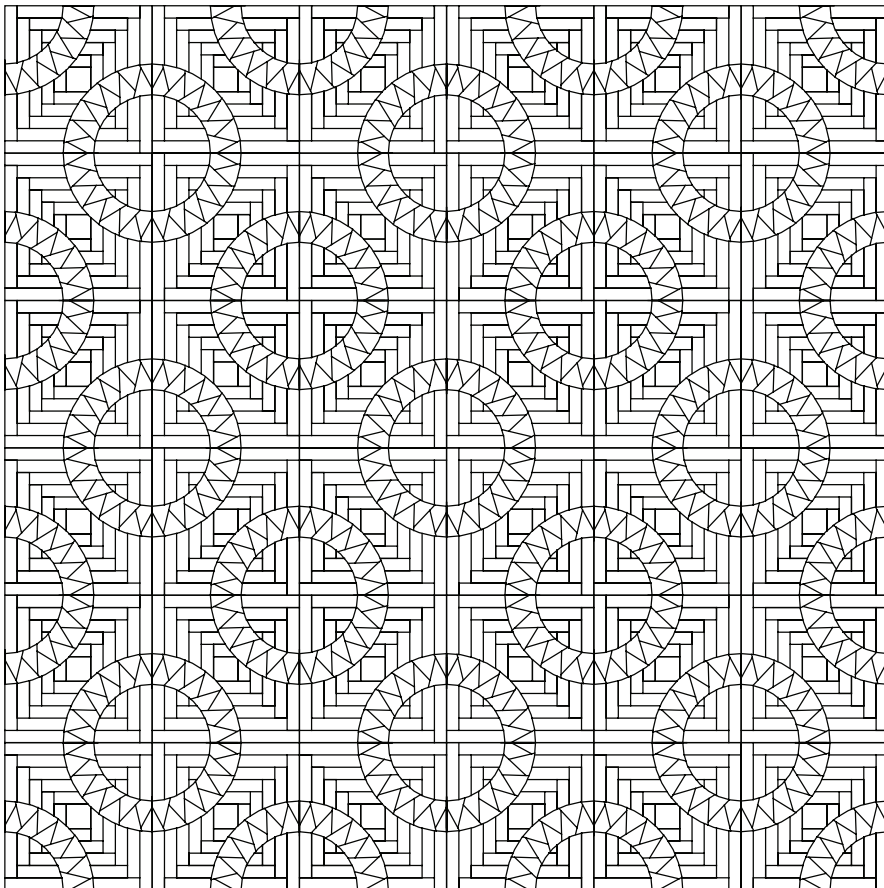
**PLACE 6 FAT QUARTERS UNDER EACH TEMPLATE LAYOUT SHEET INSTEAD OF 5! FOLLOW THE SHUFFLING INSTRUCTIONS, BUT SHUFFLE 6 FABRICS INSTEAD OF ONLY 5!**

**Illustration 8** shows the 72" x 72" layout variation, which matches light and dark color variations on each block, instead of requiring that they do not touch each other. Any layout with an even number of rows and columns will look good in a layout where the light fabrics touch the light fabrics and dark fabrics touch the dark.

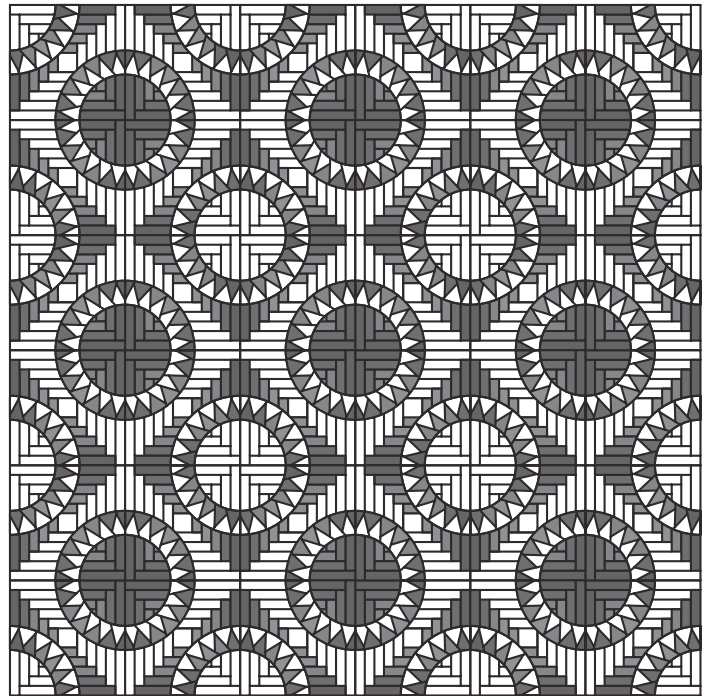
Layouts that have odd numbers of rows, tend to look better with dark and light fabrics touching each other as the symmetry of the quilt is not the same with the different layouts.

## Log Cabin Cutouts Teaser

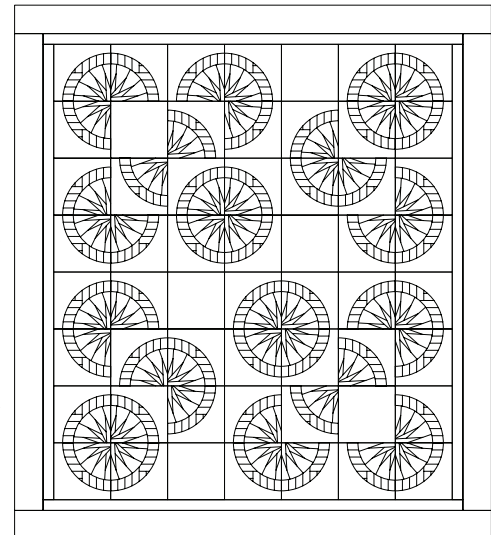
A companion quilt, named the Log Cabin Cutouts has been designed to use the cutouts from the Log Cabin block. As noted in the cutting instructions, enough fabric is also included in this pattern to complete the spikes for the star units in the Log Cabin Cutout. If this pattern is not available at your local quilt shop you can purchase the pattern by visiting our website at <http://www.quiltworx.com>, click on Browse Patterns, and search for **Log Cabin Cutouts**.



## Layout Illustration 8 (72" x 72")



## Log Cabin Cutouts 67" x 75"



## Color Layout

This Color Layout can be photocopied and used as a coloring template, which will allow you to play with your colors and determine the desired look of your quilt for both sizes.

5 by 5 block layout  
6 by 6 block layout.