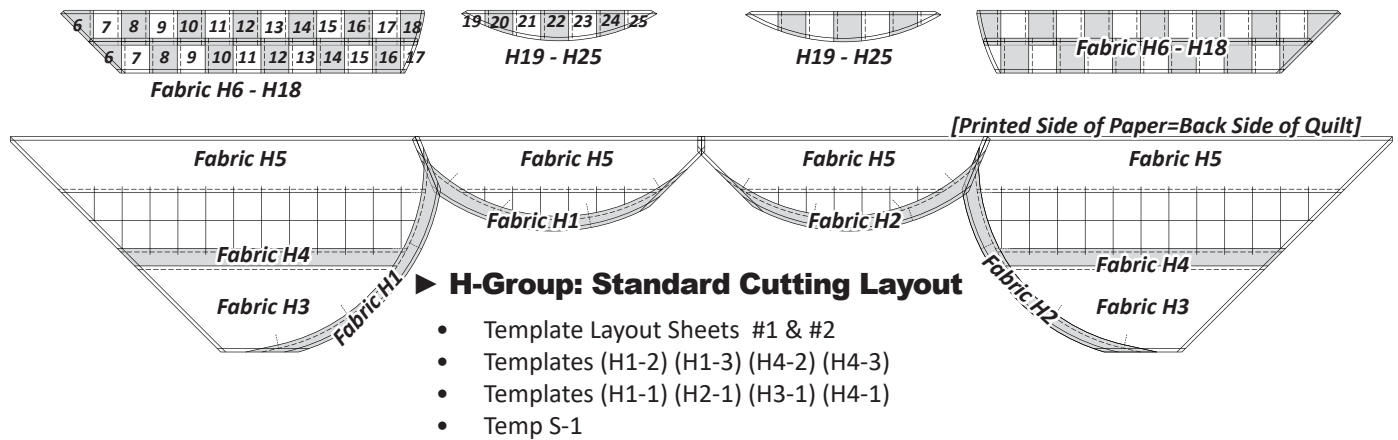


► Standard Option: Group H, Fabrics H1 - H5, Checkerboard H6 - H18 and H19 - H25



QUILTSTER OPTIONS: GROUP H

There are four coloring options available in Quiltster for the Block Groups in Group H.

- **Standard Option:** Units H1 - H4: Fabrics H1 - H25
- **Option 1:** Units H1 - H4: Fabrics H1 - H5
- **Option 2:** Units H1 - H4: Fabrics H1 - H3
- **Option 3:** Units H1 - H4: Fabrics H1 - H18

Although we provide four **different color options** for the Block Groups in Group H, many of the fabrics and templates in the **Standard Option**, are repeated in the **Option 1, 2, & 3**, just in different combinations of Units.

GROUP H: STANDARD CUTTING INSTRUCTIONS

Standard Fabric Chart: Fabrics H1-H25 are divided into three charts. Fabrics H1-H5 are provided in the first chart. Checkerboard Fabrics H6-H18, for Units H1 & H4 are provided in the second chart, and Checkerboard Fabrics H19- H25, for Units H2 & H3 are provided in the third chart. The yardage in the Fabric Chart is calculated to complete (4) blocks.

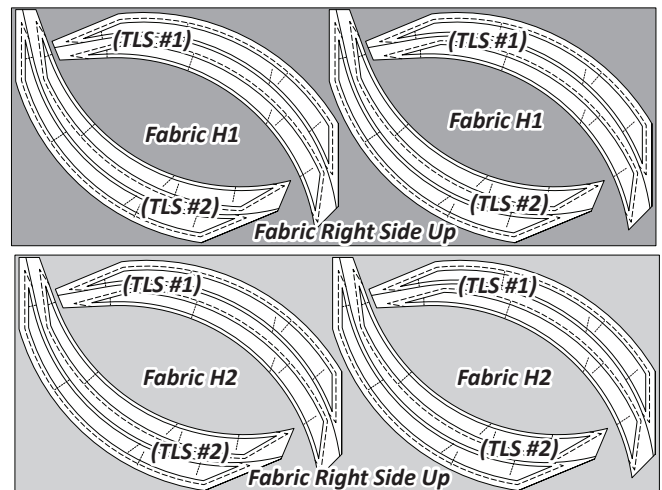
<i>Units H1-H4, Checkerboard</i> <i>Standard Yardage: Make (4) Each</i>		
GROUP-H FABRIC #	YARDAGE INCH	ASSIGNED COLOR
<u>Fabric H1</u> Unit H1 - H4 (TLS #1 & #2)	<u>1/2 yd</u> or (15-1/2")	FABRIC SWATCH
<u>Fabric H2</u> Unit H1 - H4 (TLS #1 & #2)	<u>1/2 yd</u> or (15-1/2")	FABRIC SWATCH
<u>Fabric H3</u> Unit H1 & H4 (Temp H1-3 & H4-3)	<u>7/8 yd</u> or (28")	FABRIC SWATCH
<u>Fabric H4</u> Unit H1 & H4 (Temp H1-2 & H4-2)	<u>3/8 yd</u> or (10")	FABRIC SWATCH
<u>Fabric H5</u> Unit H1- H4 (Temp H1-1, H2-1, H3-1 H4-1)	<u>1-3/4 yd</u> or (60")	FABRIC SWATCH

► Cutting Instructions:

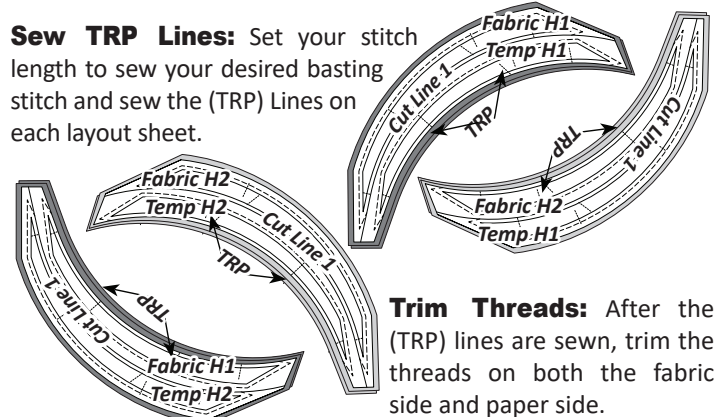
The cutting Instructions are organized as follows. **Standard Option**, (Fabric H1-H25), are listed first. **Color Option 1**, is listed second. **Color Option 2** follows, and so forth. Repeated cutting instructions will redirect back to the first instance they are presented.

► Fabric H1 & H2: (TLS #1 & #2)

Cutting Fabric Strips: To prepare the fabric strips cut (1) 15-1/2" by 42" strip from each **Fabric H1 & H2**. Place the fabric strip(s) **right-side-up**. Position (2) each, (TLS #1 & #2) onto each fabric strips. The backside of each layout sheet is placed against the **right-side** of the fabric and secured with repositionable glue. Cut around each layout sheet leaving about 1/8" of excess fabric around the edges.



Sew TRP Lines: Set your stitch length to sew your desired basting stitch and sew the (TRP) Lines on each layout sheet.



Trim Threads: After the (TRP) lines are sewn, trim the threads on both the fabric side and paper side.