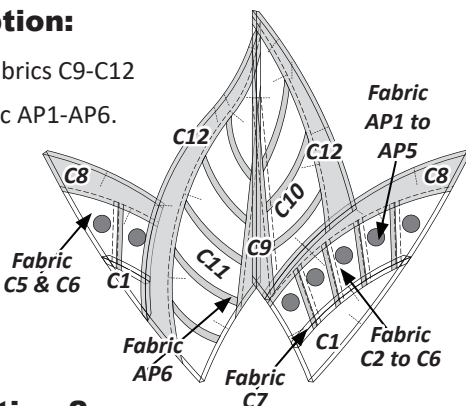


► Standard Option:

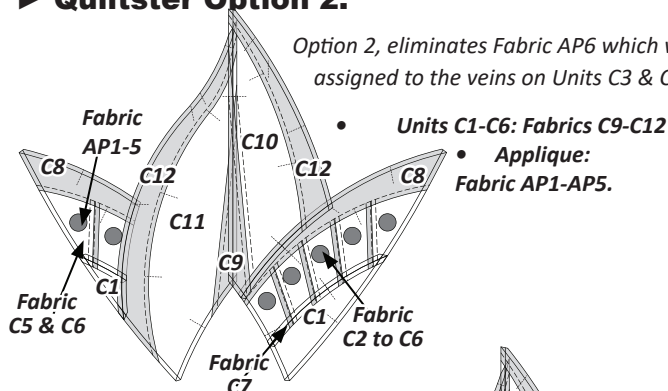
- **Units C1-C4:** Fabrics C9-C12
- Applique: Fabric AP1-AP6.

NOTE - All of these images show the Fabric References from the Front side of the quilt.



► Quiltster Option 2:

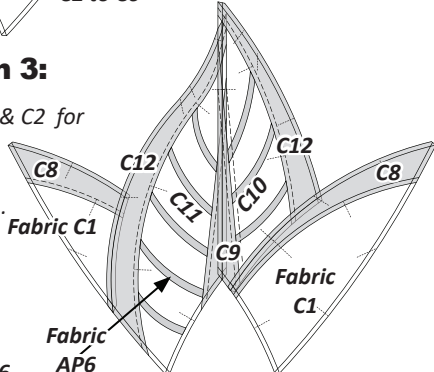
Option 2, eliminates Fabric AP6 which was assigned to the veins on Units C3 & C4.



► Quiltster Option 3:

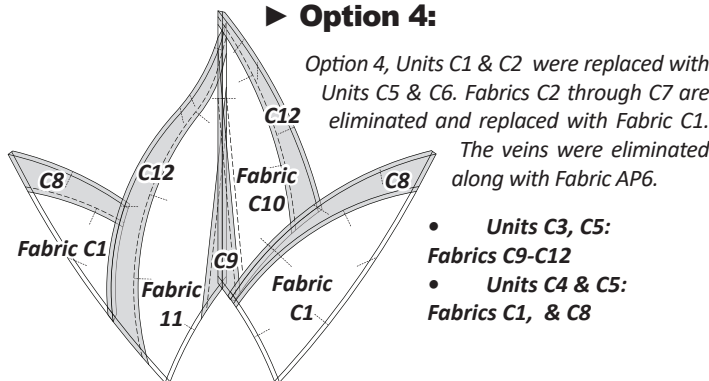
Option 3, replaces Units C1 & C2 for Units C5 & C6. Fabrics C2 through C7 are eliminated and replaced with Fabric C1.

- **Units C3, C5:** Fabrics C9-C12
- **Units C4 & C5:** Fabrics C1, & C8
- **Applique:** Fabric AP6



► Option 4:

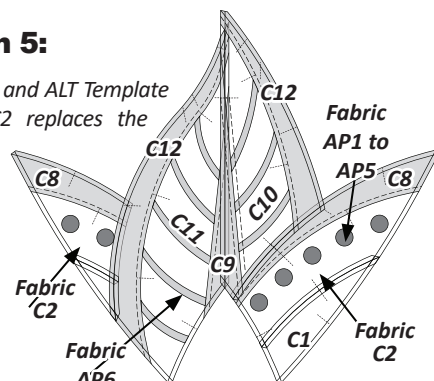
Option 4, Units C1 & C2 were replaced with Units C5 & C6. Fabrics C2 through C7 are eliminated and replaced with Fabric C1. The veins were eliminated along with Fabric AP6.



► Quiltster Option 5:

Option 5, ALT Template C1-1 and ALT Template C2-1 assigned to Fabric C2 replaces the pieced sections on Units C1 and C2, Section 1-9.

- **Units C3, C5:** Fabrics C9-C12
- **Units C1 & C2:** Fabrics C1, C2 & C8



Labeling Fabrics: For multiple color groups, label each fabric with a small letter after its reference (e.g., C1:a, C1:b, C1:c).

Stacking Fabrics for Cutting: Stack fabrics in reverse alphabetical order (e.g., C1:c (bottom), C1:b, C1:a (top)). Be sure to stack all other pieces in the same order to maintain consistency.

Labeling Papers: To reduce errors, label your papers with fabric swatches and corresponding paper #s. Proper labeling and stacking helps reduce errors, minimize fabric waste, and maintain an organized workflow when working with multiple color options. For rainbow quilts, always consult the Rainbow cutting options in the Introduction Booklet to optimize fabric usage.

■ GROUP C: CUTTING INSTRUCTIONS STANDARD & OPTION 2

Fabric Chart: The fabric chart applies to both the Standard Option and Option 2. Yardage for Fabrics C1–C12 is calculated for (8) blocks using the One Color Group Option. If you plan to use multicolor groups, refer to the Color Groups listed under each Fabric # in the cutting instructions to determine the required yardage for each color. Applique fabrics have been assigned to their own yardage chart, beginning on Page 12.

► Cutting Instructions:

Units C1-C4, Standard and Option 2 Yardage, Make (8) Each

| GROUP-C FABRIC # | YARDAGE INCH | ASSIGNED COLOR |
|---|---------------------------------|-------------------|
| Fabric C1 (T-TLS #1) | $\frac{1}{4}$ yd or (6") | FABRIC SWATCH |
| Fabric C2 Unit C1 (TLS #2) | $\frac{1}{8}$ yd or (4-1/2") | FABRIC SWATCH |
| Fabric C3 Unit C1 (TLS #3) | $\frac{1}{8}$ yd or (4-1/2") | FABRIC SWATCH |
| Fabric C4 Unit C1 (TLS #4) | $\frac{1}{8}$ yd or (4-1/2") | FABRIC SWATCH |
| Fabric C5 Unit C1 & C2 (TLS #5 & #6) | $\frac{1}{4}$ yd or (9") | FABRIC SWATCH |
| Fabric C6 Unit C1 & C2 (TLS #7 & #8) | $\frac{1}{4}$ yd or (9") | FABRIC SWATCH |
| Fabric C7 Unit C1 & C2 (TLS #9 & #10) | $\frac{1}{4}$ yd or (6-1/4") | FABRIC SWATCH |
| Fabric C8 Unit C1 & C2 (TLS #11) | $\frac{1}{2}$ yd or (18") | FABRIC SWATCH |
| Fabric C9 Unit C3 & C4 (TLS #12 & #13) | $\frac{3}{8}$ yd or (10") | FABRIC SWATCH |
| Fabric C10 Unit C3 (Template C3-1) | $\frac{1}{2}$ yd or (15") | FABRIC SWATCH |
| Fabric C11 Unit C4 (Template C4-1) | $\frac{5}{8}$ yd or (22") | FABRIC SWATCH |
| Fabric C12 Unit C3 & C4 (TLS #14) | $\frac{3}{4}$ yd or (27") | FABRIC SWATCH |

Cutting Instructions are organized as follows. **Standard Option** and **Option 2** are listed first. **Option 3 & 4**, second. **Option 5** third.