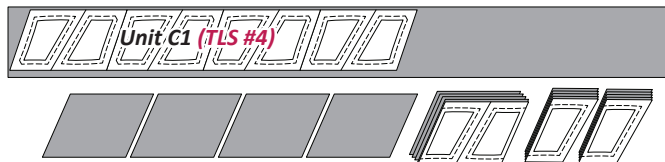
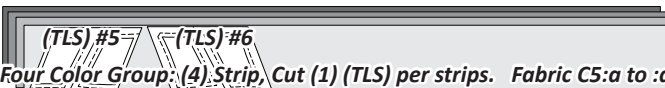
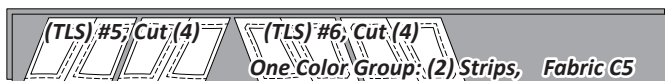


Step 1: Cut (1) strip measuring 4-1/2" by 42". Stack the strip(s) *right-side-up* and cut (4) pieces per layout sheet. Clip the pieces to the fabric beneath and cut on Line one. Place with Unit C1 in Bag C1.

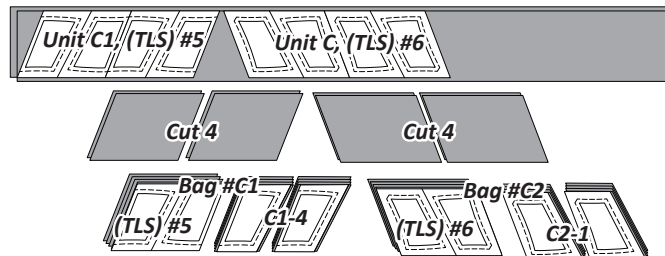


► Fabric C5, Unit C1& C2, (TLS #5 & #6)

Multiple Colors: Follow the cutting instructions based on the # of colors you are working with. For (8) Fabrics, see Fabric C2.

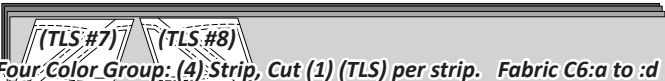
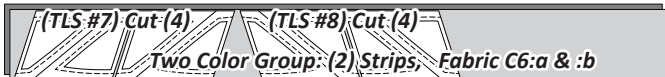
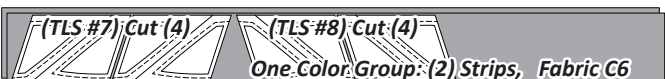


Step 1: Cut (2) 4-1/2" by 42" strips. Stack the strips *right-side-up* and cut (4) pieces per layout sheet. Clip the pieces to the fabric beneath and cut on Line one. Place with the assigned Bag #s .

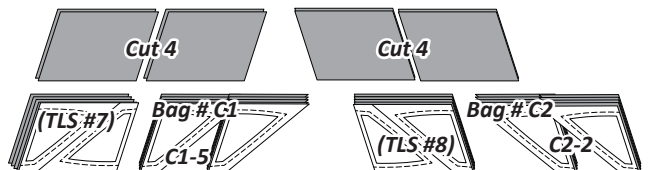


► Fabric C6, Unit C1 & C2, (TLS #7 & #8)

Multiple Colors: Follow the cutting instructions based on the # of colors you are working with. For (8) fabrics, see Fabric C2.

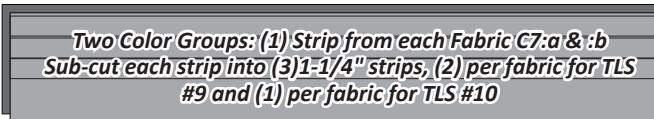
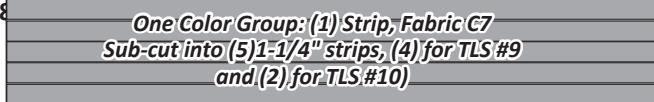


Step 1: Cut (2) strips measuring 4-1/2" by 42". Stack the strips *right-side-up* and cut (4) pieces per layout sheet. Clip the pieces to the fabric beneath and cut on Line one. Place with the assigned Bag #s.



► Fabric C7: Unit C1 (TLS #9) Unit C2 (TLS #10)

Prepare the Strips: Quiltster tells you to cut (1) 6-1/4" strip, which is then sub-cut into (5) strips measuring 1-1/4" by 42". These strips yield (8) pieces for **Unit C1 (TLS #9)** and (2) pieces **Unit C2 (TLS #10)**. We are only providing you with a (2) color options here, as after that, this cut would use a lot of wasted yardage. But, (4) color groups requires (4) strips and (8) requires (8)



Step 1: Stack the strips *right-side-up* on your cutting surface. Place (4) strips in the first group with **Unit C1 (TLS #9)**. The last strip is placed with **Unit C2 (TLS #10)**.

Step 2: **Unit C1 (TLS #9)** is used to cut (8) strips matching the size of the (TLS). Stack the strips beneath the layout sheet, trim on each cut line to yield (4) stacks with (8) pieces. Clip together and place these in Bag C1 with Unit C1. If you have (2) colorways, make sure the bottom (4) pieces are from C7:b and the top are C7:a.



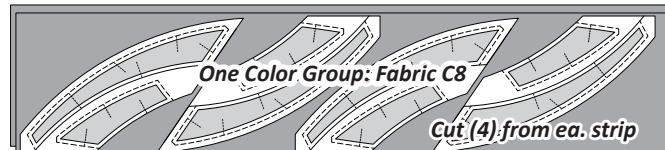
Step 3: **Unit C2 (TLS #10)** is used to cut (2) pieces matching the size of (TLS #10). For (2) colors, cut (1) piece from each strip. Stack the strips beneath the layout sheet, trim on each cut line to yield (4) stacks with (2) pieces. Re-stack into (1) stack of (8) pieces, then clip these together and place in Bag C1 with Unit C2. For (2) colorways, make sure the (4) C7:b fabrics are on the bottom and the C7:a fabrics are on the top.



► Fabric C8: (TLS #11)

Preparing the Strips: Two (2) strips measuring 9" by 42" are needed to complete the cutting for **Unit C1 & C2, (TLS #11)**. Follow the instructions based on your Color Group.

- **One Color Group:** Cut (2) strips measuring 9" by 42" from Fabric C8. Cut (4) templates from each strip.



- **Two Color Group:** Cut (1) strip measuring 9" by 42" from ea. Fabric C8:a & C8:b. Cut (4) templates from each strip.

