

Quilt Size: 60" x 72"

GENERAL INFORMATION

Sunflower Illusions was designed by Quiltworx in 2022 as an addition to our collection of patterns from the Fireworks Block Mixer Series. Foundation paper piecing, floating points, Template Layout Sheets, and curved paper piecing techniques for attaching the veins are all featured in these instructions. These are design standards our customers have come to expect from Quiltworx patterns. After the paper piecing is completed, traditional curved piecing is required to assemble the blocks. This quilt is fun to make and easily adapted to using strips and background fabric from your own stash if you like.

Newsprint: Foundation papers, templates, and Template Layout Sheets are printed on newsprint. Newsprint is lightweight and tears away from your stitches without damaging the threads. This pattern has been packaged with enough papers to complete one 60" by 72" quilt. Use the list below to sort and verify that your pattern was packaged with the correct papers. The NP-# (or TP-#) is printed along the edge of each page.

JNQ00275B002: Melon-Spikes

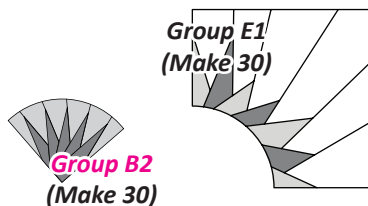
- NP 866: 4 Pages

JNQ00275E001: Sawtooth

- NP 869: 9 Pages
- NP 870: 9 Pages

Quilt Assembly

- LP 76: 1 Page



Corrections: If corrections are needed for this pattern after publication, they will be listed online at www.quiltworx.com. Click on Products: Corrections and scroll through the alphabetical list. Or visit the pattern page under Products to see if there is a "Corrections" list in the right column. Check the print date on the back of this pattern. If the corrections are dated before your print date, your pattern is up to date! If there are no corrections listed, no errors have been identified! If you run across something you think may be an error, please let us know and we will either post a correction or clarify the issue for you. To quickly access the pattern page, scan the code at the bottom of the first column.



SUPPLY LIST

General Supply List: Steam iron, ironing board, large size cutting board, 6" by 24" ruler, small scissors, rotary cutter, seam ripper, and a sewing machine with a quarter-inch foot.

Paper Piecing Supply List: 12" and 18" *Add-A-Quarter* rulers, Scotch tape, fabric glue stic, washout fabric glue pen, repositionable glue, a fold template, flower pins, large Ziploc bags, curved diamond cutting and trimming ruler, a Purple Thang, size 70 sewing needles, and a high-quality cotton thread. Other handy items used to keep your templates, fabrics, and papers organized are paper clips and binder clips.

NOTE - Taking Workshops: If you are taking a class from one of our Certified Shops or Instructors please use the class handout and supply list that they provide for their classes.

DEFINITION COMMON TOOLS & TERMS

Purple Thang: This is a small plastic tool used like a stiletto that does not poke through the fabric and helps guide the fabric between the presser foot and feed dogs when sewing over several layers of stacked seams.

Add-A-Quarter Ruler: A small ruler with a quarter-inch lip on the bottom side used to trim the quarter-inch seams for Foundation Paper piecing. These can be purchased in three (3) sizes: 6", 12", and 18" rulers. I recommend the 12" & 18" rulers for this pattern.

Washout Fabric Glue Stic, Repositionable Glue, and Glue Pen: I use a water soluble glue stic to adhere the first piece of fabric to the back side of the foundation paper. Repositionable glue helps secure templates to fabric during cutting, while still being able to easily move and remove them without leaving a residue. We use the glue pen to temporarily glue the raw edges together before sewing any long straight or curved seams.

Flower Pins: Flower pins are a long pin with a flat flower glued to the head of each pin. The flower is flat so the paper can easily be folded back over the pin and still lie flat.

Fold Template: A flat piece of template plastic used as a straight edge while folding back the foundation papers just before trimming with the *Add-A-Quarter* ruler. A 3" by 12" piece of template plastic should be cut to use with the 12" *Add-A-Quarter*. A 3-1/2" by 18" piece is cut for the 18" ruler.

Sewing Lines on the Foundation Papers: You will find the sew lines on each foundation unit labeled as Sew Line 1, Sew Line 2, 3, & 4. The lines are marked in chronological order.

Dashed Lines on the Foundation Paper: These lines are reference lines marking the edge of your 1/4" seam allowance. They are not sewing lines. The dashed lines when sewing are lined up with the raw edges on the strips.

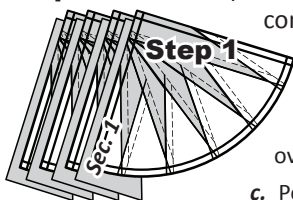
Sew-Sides: The sew-side on each piece of fabric is the first seam sewn onto the foundation paper. The sew-side on every piece of fabric you sew onto the foundation paper will always line up with the trimmed quarter-inch seam along the folded edge of the foundation paper.

Right Side of the Paper: The side with all the printing, also referred to as the front side.

Wrong Side of the Paper: The blank side with no printing, also referred to as the back side of the paper.

Ziploc Bags: We use Ziploc bags to keep the Templates and Template Layout Sheets together with the Foundation Papers. After you cut your fabric pieces for each unit the fabrics are placed into the corresponding bags with the Foundation Papers. At this time you will need (2) large bags, one for each Block Group to keep your foundation papers, templates, strip groups and background fabric organized for each booklet. Label them as follows:

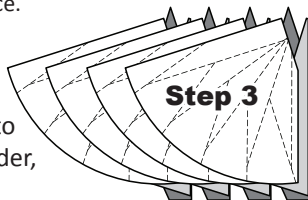
Step 2: The next part of the chain piecing would involve completing Steps a–d.



- Line the Fold Template up with the Sew Line.
- Fold the paper back over the fold template.
- Position the **Add-A-Quarter** ruler.
- Trim a quarter-inch seam allowance.

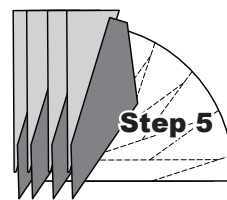
Step 3: Fabric #2 is now placed in position under each paper.

Step 4: The fabrics are sewn onto the units, playing follow the leader,



starting with the first piece of paper on the top of your stack, then the second and third, and so on, until all the pieces have been sewn.

Step 5: The fabric is pressed on the back side of the paper. The steps are repeated as you add each round of fabric.



USING THE INSTRUCTIONS FOR THIS PATTERN

The following instructions are set up by Chapter based on the blocks that are included in your pattern. It is recommended that you complete the instructions in each chapter and chain piece each type of block before moving on to the next chapter.

Melon - Spikes

Chapter 1 Fireworks Mixers JNQ00275-B-002

GROUP B2: MELON - SPIKES INSTRUCTIONS

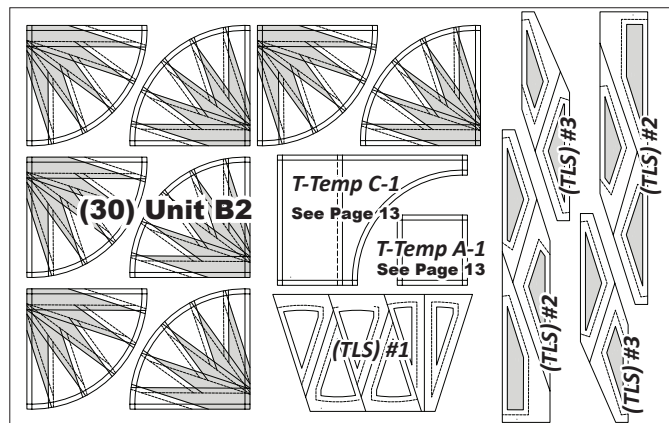
Ziploc Storage Bags: You will need (1) bag to complete the organization for these blocks. Label the bag as follows to stay organized while cutting the Foundation Units and Templates. This package includes (32) **Foundation Units**.

- Block Group Bag B2: (30) Unit B2 Foundation Papers and associated Templates

► Preparing Foundation Papers & Templates:

Cut out (30) Unit B2, foundation papers [NP 866] and place in Group Bag B2 along with all of the templates and Template Layout Sheets (TLS). See the newsprint below for assigned Unit and Template names.

**Refer back to General Information under Foundation Papers and Templates for instructions on how to prepare your foundation papers and templates.*



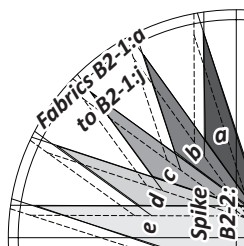
▼ (4) NP 866

NOTE - T-Template C-1 and T-Temp A-1 are alternatives background template used to square up the B Group Units into (2) different block sizes. Reference cutting instructions and yardage information on Page

13 under 'Alternative T-Template Cutting Instructions'.

► Color Layout:

The color layout matches the printed side of the paper, which reflects the backside of the quilt.



► Fabric Information:

The *Unit Chart* included on the next page provides yardage, fabric numbers, and a reference to the Fabrics #s assigned to the (TLS's) for Unit B2. Fabrics B2-1:a to B2-1:j are assigned to the (BKG) and Fabrics B2-2:a to :e are assigned to the Spikes. For each Fabric # we have listed the total yardage, along with the # of strips required if using multiple fabrics.

Unit B2: (30) Blocks		
GROUP-B2 FABRIC #	YARDAGE/INCH	FABRIC SWATCH
Fabric B2-1:a to B2-1:j BKG Unit B2 (TLS) #1	1 yd or (36") or (1) 6" Strip per fabric, :a to :j	Fabric a:
Fabric :b	Fabric :c	Fabric :d
Fabric :e	Fabric :f	Fabric :g
Fabric :h	Fabric :i	Fabric :j
Fabric B2-2:a Spikes (TLS #3, Sec. Temp B2)	3/8 yd or (10") (4) 2-1/2" strips	Fabric Swatch
Fabric B2-2:b Spikes (TLS #2, Sec. Temp B4)	3/8 yd or (10") (4) 2-1/2" strips	Fabric Swatch
Fabric B2-2:c Spikes (TLS #2, Sec. Temp B6)	3/8 yd or (10") (4) 2-1/2" strips	Fabric Swatch
Fabric B2-2:d Spikes (TLS #3, Sec. Temp B8)	3/8 yd or (10") (4) 2-1/2" strips	Fabric Swatch
Fabric B2-2:e Spikes (TLS #2, Sec. Temp B10)	3/8 yd or (10") (4) 2-1/2" strips	Fabric Swatch