



Carnival Flower

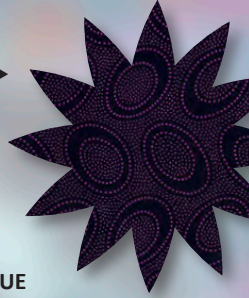
QUEEN
99" X 99"

Pieced by Quiltworx and Quilted by Shawna Crawford



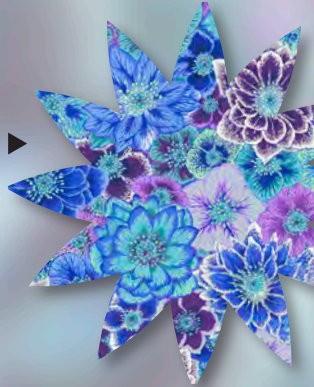
Backing: 9 yd • Binding: 7/8 yd: PWBM083.BLUE

A1, B2, B3, C3, C4,
D1, D2, D3, D5, D8,
E1, E3, F1, G2, I1
PWGP071-ORCHI
10 1/4 yd



E5
PWPJ113.BLUE
3/8 yd

C1:a, C2:a, E4
PWPJ118.BLUE
1 yd



A2
PWPJ114.MAUVE
1/8 yd

E2
PWGP091.PASTEL
1/4 yd

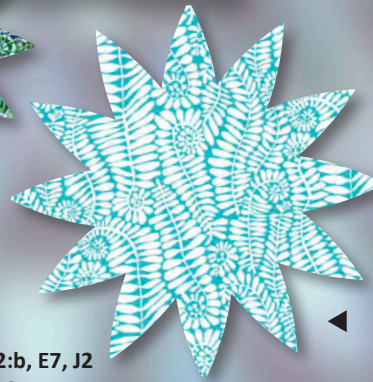


A3, E6, H1
PWGP106.BLUE
1 7/8 yd

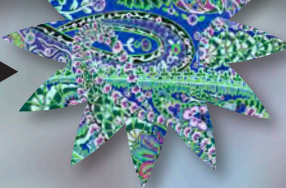


B1, C5, C6, D6, D7,
D9, D10, D11, G1,
H2, I2, J1, J3, J5
PWBM085.WHITE
6 5/8 yd

C1:b, C2:b, E7, J2
PWPJ116.TEAL
3 1/8 yd



F4
GP60.COBALE
1/2 yd



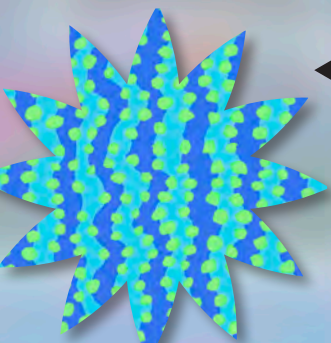
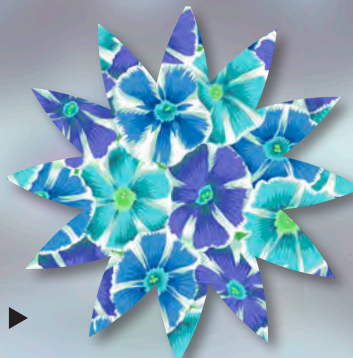
A4, C1:c, C2:c F3, J4
PWBM083.BLUE
3 yd



F2
PWBM082.AQUA
1/2 yd



F5
PWPJ117.BLUE
1/8 yd



Quiltworx.com
Judy Niemeyer Quilting

E-mail: info@quiltworx.com
Website: www.quiltworx.com

Visit us on:

