

Dinner Plate Dahlia

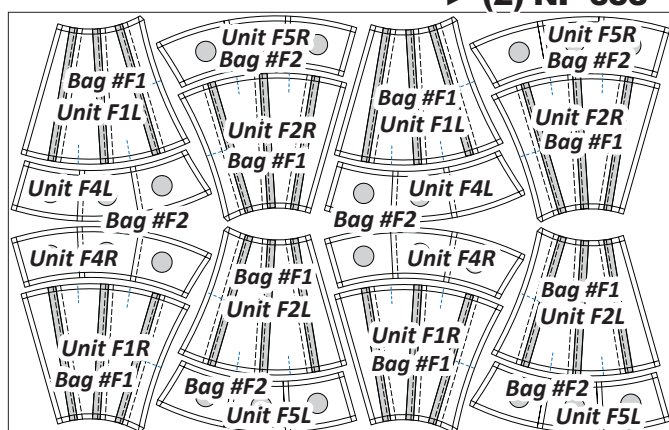
Booklet Two, Queen Border Group F

Vintage Fan: Includes the foundation papers, template layout sheets, and instructions needed to complete:

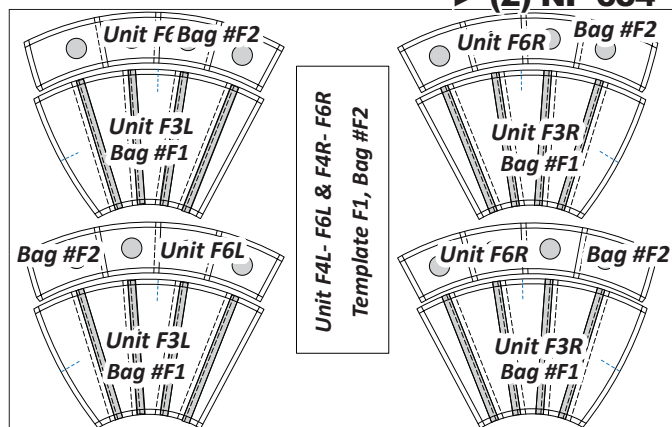
- Units F1L-F3L, F1R-F3R, F4L-F6L, F4R-F6R: Vintage Fan

Newsprint NP 653, NP 654, TP 468, TP 469: The following newsprint includes the Foundation Papers, T-Templates, and Template Layout Sheets required to complete the piecing for Group F. The Foundation Papers, Templates and Template Layout Sheets are cut out at this time.

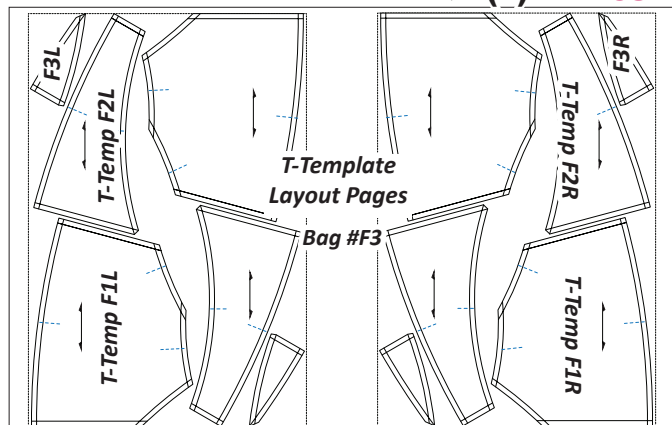
► (2) NP 653



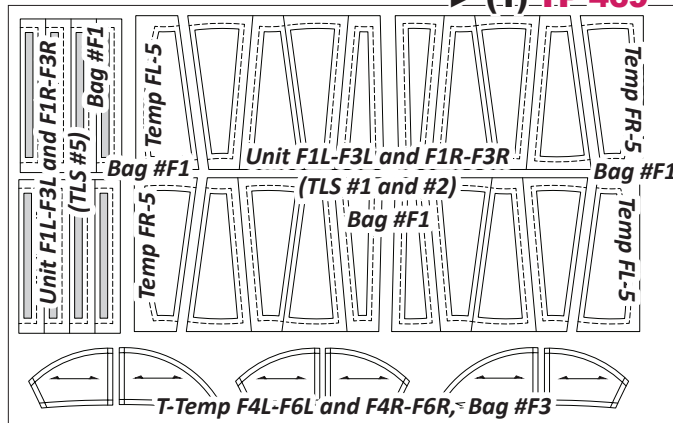
► (2) NP 654



► (1) TP 468



► (1) TP 469



Reference Page 3 of the Introduction Booklet under Foundation Papers and Templates for instructions on how to cut out the Foundation Papers, Templates, and Template Layout Sheets.

After the paper units and templates are cut out, the foundation papers are sorted and grouped together by **Unit Name** then placed into their associated bags listed below. The T-Templates and Template Layout Sheets are clipped together and placed in a separate bag at this time. The sorting of all the templates in each group is completed after the templates are placed with their assigned fabrics and the template cutting is completed for each fabric.

Ziploc Bags: (3) large Ziploc bags are needed to keep your fabrics, templates, and papers organized. Label as follows:

- Bag #F1:** (4) each Unit F1L-F3L & F1R-F3R Foundation Papers and associated Templates & Template Layout Sheets.
- Bag #F2:** (4) each Unit F4L-F6L & F4R-F6R Foundation Papers and associated Template Layout Sheets.
- Bag #F3:** (1) T-Temp F1L-F3L, F1R-F3R, F4L-F6L, F4R-F6R.

General Color Information: Out of the (14) different samples shown on the cover pages, none of them were designed using the Unlock Button in Quiltster. This means no one chose to make the Vintage Fan units in different fabrics from unit to unit. As a result, the instructions in this section are written assuming all of the blocks are made to look identical. If you would like to try a more colorful look, Quiltster and the Unlock Button can be used to help you with this. The program will give you adjusted yardage and you will need to adapt the cutting instructions included here, for the number of different fabrics you plan to use. Quiltster will help you with this by giving you Strip cutting information. Just click on Yardage, Block, and see how many strips of each size you need to cut.

Assigned Fabric #: We have assigned Fabric #s to each of the Sec. #s on the Foundation Units. These Fabric #s pair up with the Fabric #s in Quiltster and the Fabric Charts provided in the Introduction Booklet. The Fabric #s will also be used to reference the Templates and Template Layout Sheets used to cut the fabric pieces throughout these instructions.