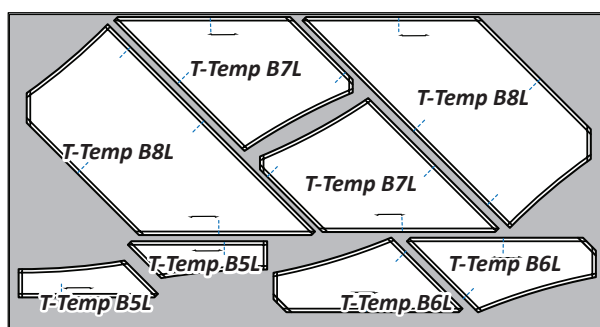


Step 4: If the pieces aren't already clipped together, clip them with a paper clip, by T-Template, and place the stacks into Bag #B5.

► Fabric B4: Main Background Fabric

Step 1: From Fabric B4, cut (4) 22-1/2" x 42" strips. It is best to cut these strips (1) at a time, instead of stacking.

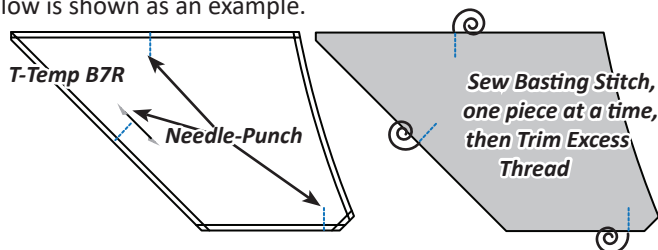
Step 2: Place the following T-Templates on (2) strips and trim around them on the dark solid line, being careful along the curves. All of the Left Side T-Templates are shown below. The Right Side T-Templates are laid out the same, just a mirror image of the below.



Step 3: Clip these together, by T-Template shape until you are ready to add Registration lines, described in the next step.

ADDING REGISTRATION LINES

Step 1: The T-Templates have registration lines (marked as dotted lines with a TRP label). Remove each **T-Template B5 to B8**, (R & L) set from Bag #B5, one set at a time. Make sure the T-Template is stacked on top of all of the similarly sized fabric pieces and all of the edges are perfectly aligned. The graphic below is shown as an example.



Step 2: Unthread your machine and sew through the paper and the stack of fabrics with just the needle, marking the registration lines on each fabric.

Step 3: Re-thread the machine, and set the stitch length = 2.8 or greater. Sew on the lines marked by the needle-punching.

NOTE - Marking Pencil Option: Double check the needle punch holes against the T-Template before sewing each piece. If the needle punch holes do not match because the pieces weren't perfectly aligned when punched, you may need to use a marking pencil and mark the registration lines on the backside of the fabric.

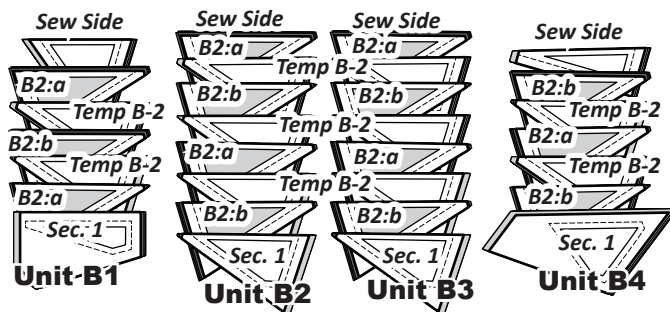
NOTE - Quilt Size: If your quilt does not have border extensions, you do not need to add the TRP lines along the outside edge.

Step 4: Trim the threads back to about 1/2". Repeat this process for each of the cut template pieces. Then, clip the fabric pieces to the appropriate T-Templates and place back into Bag #B5.

STACKING: UNITS B1 TO B4

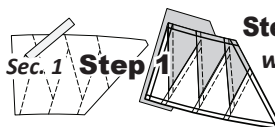
The template pieces are stacked in the order you sew them to the paper. Position the templates and fabric pieces in numerical order facing **right-side up**, with the **sew-sides** aligned at the top. Sec. 1 does not have a sew side.

Stacking: The stacking process begins with the largest Sec. # on the bottom. The pieces are stacked in reverse order finishing with Sec. 1 on top. Pay attention to your Fabric B2:a and B2:b stacks to make sure they alternate. Also, you will have several Temp B-2 stacks that don't have section numbers on them. They are the same pieces for each section, so simply put one stack of Temp B-2 included in each of the bags as shown in the graphic.



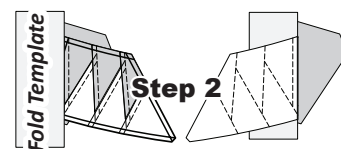
PAPER PIECING: UNITS B1 TO B4

NOTE - Tracing the Dashed Lines: Place the foundation paper onto a light table. Flip the foundation paper over and trace the dashed lines printed on the front side onto the backside of the paper.

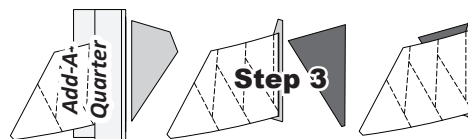


Step 1: The first piece of fabric is placed **wrong-side-up** on your table. Lift the foundation paper, slide the fabric under Sec. 1. Glue is used to adhere the fabric to the backside of the paper. Repeat Step 1 for each foundation unit.

Step 2: Place the fold template over the top of Sec. 1 and line the edge up with the solid line marked Line 1. Fold the paper back over the top of the fold template.



Step 3: Place the **Add-A-Quarter** ruler next to the folded paper and trim the fabric with your rotary cutter. Then, place the fabric piece for Sec. 2, **right-side up** next to the folded back paper. Lift the paper, and slide the fabric under Sec. 1, line the sew-side up with the trimmed seam allowance. Repeat **Steps 1-3** for each foundation paper before moving onto Step 4.



Step 4: Sew on Line 1. The stitches should start and stop about 1/8" past the beginning and the end of each stitch line. Complete the sewing on each Unit before moving onto the next step.

NOTE - Trimming the Threads: Sew past the ends of your sew line to easily cut the thread ends off each time you trim with your **Add-A-Quarter** ruler.