

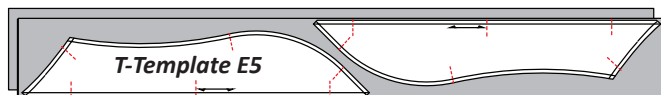
GROUP E: T-TEMPLATE CUTTING INSTRUCTIONS BAG E1& E2

Before you begin cutting your fabrics, take a few minutes to cut and paste fabric swatches onto the T-Templates. A small swatch on each T-Template will prevent placing the wrong templates onto the wrong fabric strips. I bet you can't guess why we know this works!!!

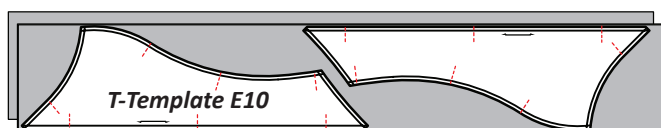
► Fabric E1: Background

- T-Template E5, Bag Group E-1
- T-Template E10, Bag Group E-2

Step 1: Cut (2) 6" by 42" strips from Background Fabric E1. Stack the strips facing **right-side-up** into one stack. T-Template E5 is used to cut (4) pieces.



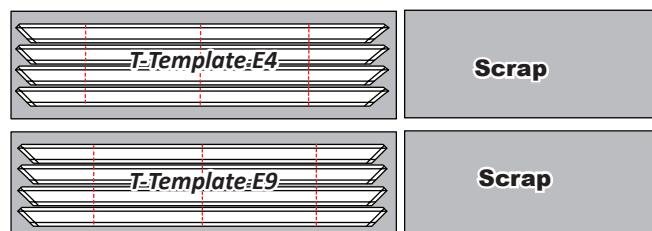
Step 2: Cut (2) 7" by 42" strips from Background Fabric E1. Stack the strips facing **right-side-up** into one stack. T-Template E10 is used to cut (4) pieces.



► Fabric E2: Accent

- T-Template E4, Bag Group E-1
- T-Template E9, Bag Group E-2

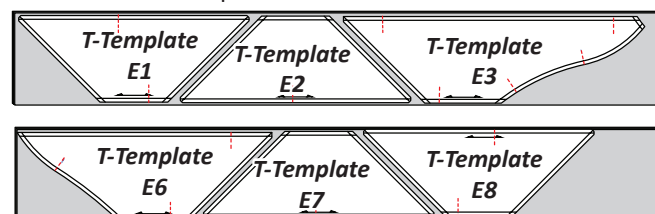
Step 3: Cut (2) 6" by 42" strips from Accent Fabric E2. Position one each T-Template E4 and E9 onto the **right-side** of each strip. Cut (1) rectangle for each template. Do not subcut the strips at this time!



► Fabric E3: Background

- T-Template E1, E2, E3, Bag Group E-1
- T-Template E6, E7, E8, Bag Group E-2

Step 4: Cut (6) 6" by 42" strips from Background Fabric E3. Stack the strips facing **right-side-up** into two stack of (4) strips. Position the following templates onto each stack as shown and cut (4) pieces from each template.



NOTE - Large Print Backgrounds: If you don't want a pieced the border, T-Templates [E1, E2, & E3] and [E6, E7, & E8] can be taped together in two groups and each group can be cut as one piece. Make sure you

have accounted for the Seam allowances properly and that you mark the Transition points! Smart Corners should help you get the perfect alignment when taping the pieces together. This approach was used for the Queen option made from Art Gallery Fabrics.

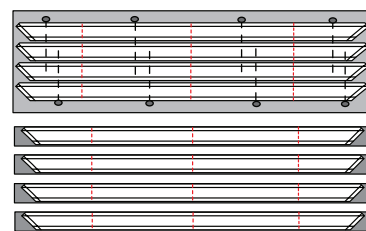
► T-Template (TRP) Transition Points

T-Templates E1, E2, E3, E5, E6, E7, E8, & E10: After the cutting is completed for each of the T-Templates, mark, then sew the registration lines onto each of the fabric pieces cut with the templates.

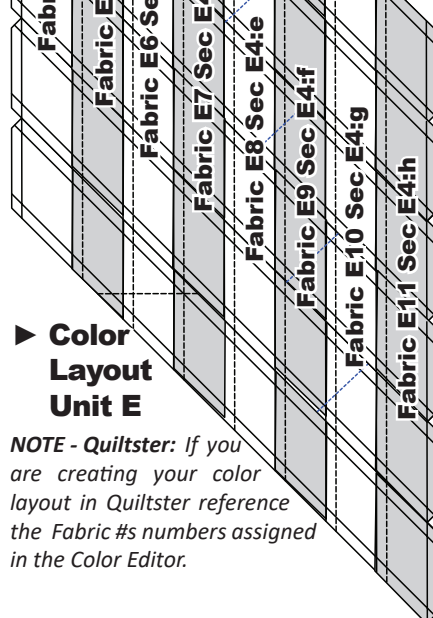
T-Template E1, E2, E7, & E8: These templates are all the same size. However, look closely and you will find that the (TRP)..... lines are printed in different locations. The registration lines printed on each of the T-Templates all match up to other registration lines on different units. If you mix up the Templates for E1, E2, E7, and E8, your registration lines won't match up properly to the other units when you begin to assemble the quilt. *Ask me how I know!* So, when you are done sewing the registration lines, clip the correct T-Templates to the correct pieces and place them into their respective bags.

NOTE - Tip: Double-sided tape placed onto the backside of each T-Template is an easy way to move the template pieces from one fabric piece to the next.

T-Templates E4, E9: The T-Template Layout Sheets are pinned onto the **right-side** of the fabric pieces cut for each template. Pinning the fabric and layout sheets will make it a little easier to work with. Sew the



three registration lines on each T-Template. After the registration lines are sewn, remove the pins and cut the strips on Cut Lines 1-3. Trim the ends on each strip to fit the paper. Template E4 and E9 are different sizes so don't remove the paper until you are ready to assemble your quilt. At this time, place the pieces into their respective bags.



► Color Layout Unit E

NOTE - Quiltster: If you are creating your color layout in Quiltster reference the Fabric #s numbers assigned in the Color Editor.

GROUP E: UNIT E1-E6 CUTTING INSTRUCTION BAG E-3

Units E1-E6: The foundation papers for Unit E1-E6 were designed for strip piecing. A total of (8) Fabric #s are assigned to the diamond border. Feel free to repeat your colors any way you want.

Fabric Layout: A fabric swatch box is provided on Page 1.