

Geese Migrations Corrections File

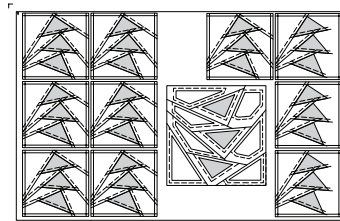
Page: 27

Getting to Know Your Units: JZR

Date: 06/13/2015

NP 197 does not have Template G geese on it. The Template G is built into the JZR & G Template Layout Sheet. The Template Gs in the graphic were removed.

NP 197 - Unit JZR and Template JZR & G Layout Sheet



Step 1

Page: 30

Getting to Know Your Units: Small Stars

Date: 06/13/2015

The SS, SSL and SSR Units were mis-labeled as LSL LS and LSR throughout the text. Also, there was a typo on TP 94, which should be TP 95.

Instructions Using the SSL/SSR (NP 196), SS-1, SSR-2 and SSL-2 Layout Sheets (TP 95) to make (10) Small Stars:

- Step 1:** Cut (40) Unit SSL and (40) Unit SSR from (1) NP 196 and (1) TP 95. Cut (1) Template **SSR-2, SSL-2, and SS-1** Layout Sheet from the newsprint (TP 95). *Note that one NP 196 and TP 95, combined, makes (10) Small Stars.*
- Step 2:** Cut (4) 7" by 42" background strips, then subcut (10) 7" x 13-1/2" rectangles. *Note that (3) layout sheets fit on (1) 7" x 42" strip and (1) Template SS-1 Layout Sheet creates (1) star. So (10) stars requires (4) strips.*
- Step 3:** Stack the rectangles, then cut apart with the Template SS-1 Layout Sheet and clip the stacks.
- Step 4:** Cut (10) 2-1/2" x 42" accent strips and stack into (2) stacks of (5).
- Step 5:** Cut (1) parallelogram the size of (1) Template SSR-2 Layout Sheet from (5) strips. Cut on the Cut Lines, then clip the stacks together. *Note that (1) 2-1/2" x 42" strip creates (2) Small Stars. For (10) stars, you need (5) strips.*
- Step 6:** Repeat this process with the remaining (5) strips and the Template **SSL-2** Layout Sheet.
- Step 7:** Reference the Stacking diagrams in Step 7 to prepare the units for Foundation Paper piecing.

Pages: 18, 20, 22, 26
Getting to Know Your Units

Date: 07/23/2015

Typo!

Step 1:

Step 2: Cut (10) 10" Squares, half from one color and half from a contrasting color. *Note that (4) units fit on (1) 10" x 42" strip so (10) squares requires (3) strips of each color.*

Pages: 20, 22, 24, 26, 28, 30, 32, 34

Getting to Know Your Units

Date: 06/13/2015

The pattern originally included number references for Paper-piecing. Comments on readability caused us to change these to alphabetic references instead of numerical. But, the last sentence of Step G originally referenced repeating step numbers. We missed the update on this and copy pasted it throughout.

Step G: Slide the fabric under Sec. 2, lining the sew-side up with the trimmed quarter-inch seam allowance. Make sure the fabric extends beyond the boundaries of the dashed lines for Sec. 2. **Repeat Steps D-G for each Foundation Paper before moving onto Step H.**

Page 49:

Pattern: Circling the Sun

Date: 06/13/2015

Backing (3 Yds) and Binding (1/2 Yd)

Geese Migrations Corrections File

Page: 41

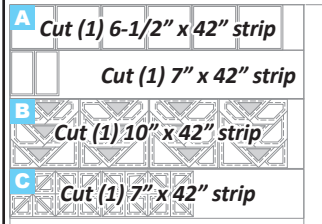
Pattern: Geese Migrations

Date: 05/02/2015

Color #7 only needs (2) 7" x 13-1/2" strips. We still recommend getting 7/8 Yard in case you need some extra fabric to fix any errors.

7/8 Yd

C7



CUT SIZES	7" x 13-1/2" Rectangles
TEMPLATE LAYOUT SHEET	SS-1
BAG #	3
FABRIC #	
C1	3
C2	2
C3	--
C4	4
C5	3
C6	2
C7	2

Page: 42

Pattern: Geese Migrations

Date: 05/02/2015

In an edit prior to publication, we realized that the cutting graphics for the Tempalte CS-2 Layout sheet had the Layout Sheets running horizontal instead of vertical. When we changed the directions, more fit on a strip. We changed the graphic and updated the cut size, but we missed adjusting the number of strips! You only need (1) now, instead of (2).

A C8: Template CS-2 & CS-4 Layout Sheet, Bag #2

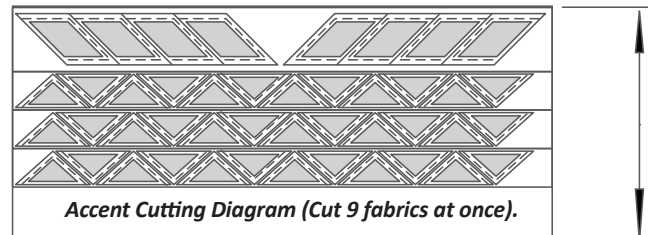
- Cut (2) 5-1/4" x 42" strips and (1) 8-3/4" x 42" strip.
- Subcut (6) 8-3/4" x 7" rectangles from the 8-3/4" strip. Clip to the Template CS-2 Layout Sheet in Bag #2.

Page: 66

Pattern: Cabin Comforts

Date: 05/02/2015

The graphic shows 14 geese, when only 12 can fit on a 42 inch strip.



Page: 67

Pattern: Cabin Comforts

Date: 05/02/2015

Cut and Paste Error! Background Fabric #C2, top of last column, and 3rd bullet down.

- Re-stack the rectangles, right-side up, into (6) sets of (10) rectangles.

Page: 66 & 68

Pattern: Cabin Comforts

Date: 07/23/2015

Typos!

Accent Fabrics C3 to C11 - Geese and Stars: 1/2 Yd, Each

- Stack the (9) Accent Fabrics, right-side up.
- Cut (1) 5" x 42" strip from each fabric.
- Cut (3) 3" x 42" strips from each fabric.

PAGE 68:

Step 1: Lay the quilt out on a design wall as shown in the **Illustration #5** graphic.

Geese Migrations Corrections File

Page: 71

Pattern: Canadiana

Date: 05/02/2015

Cut and Paste Error! Bag #s got mixed up for Color C1 Beige, Steps B and E.

**B Template CZL-A
Layout Sheet, Bag #3:**

- Repeat the instructions for C1-A, but cut with the Template CZL-A Layout Sheets in Bag #3.
- Return the pieces to Bag #3.

**E Stem Backgrounds
(No Template), Bag #4:**

- Cut (16) 5" squares from the left over fabric.
- Stack into (2) sets of (8) and slice along the diagonal, resulting in 32 triangles that will fit Sec. 1 and Sec. 3 on the Stem Unit.
- Clip and place in Bag #4.

Page: 91

Pattern: Geese over the Flathead

Date: 07/23/2015

Cut and Paste Error!

**Template CS-3 Layout Sheet (Celestial
Sun Accent #4): 1/4 Yd Deep Orange**

Step 1: Cut (1) 7-3/4" x 8-1/2" rectangle.

Step 2: Cut apart using the Template CS-3 Layout Sheet in Bag #2 as a guide. Clip the pieces together and place in Bag #2.

Page: 101

Pattern: Mediterranean Garden

Date: 04/08/2015

Right before publication, we discovered that the CAD file for this pattern did not include the Cactus Flower blocks in the border and therefore, the pattern had been written without them. In our attempt to correct this, we did not realize until the book was already in print that this reduced the pages needed for Unit JZR-A and JZL-A. To decrease the cost of the paper set and not encourage waste, we issued this correction, reduced the kit cost by \$4.00 (retail), and have issued this correction so the book information will match the paper package information and what you really need! If your paper set has more papers than you need (about (15) went out with additional sheets in them, just set the additional sheet aside. Prices were updated before consumer purchase, so you paid the correct price and received a few newsprints for free!

You will need (6) gallon size storage bags and the following Newsprint to prepare your *Mediterranean Garden* quilt project.

Newsprint #	Unit Names	# of Sheets	Ref. Page
NP 272:	Unit M	2 sheets	34
NP 168:	Center Spike	4 sheets	32
TP 128:	Center Spike Templates	1 sheet	32
NP 260:	Geese Unit CZR-A	2 sheets	22
NP 268:	Geese Unit JZR-A	3 sheets	26
NP 269:	Geese Unit JZL-A	3 sheets	26

Reference the directions on the noted reference pages to learn how to cut out the Foundation Papers, Templates, and Template Layout Sheets included on the newsprint sheets listed above. Using the Bag Graphics on this page, cut out and organize the Foundation Papers, Cutting Templates, and Template Layout Sheets accordingly.

Page: 103

Pattern: Mediterranean Garden

Date: 04/08/2015

Right before publication, we discovered that the CAD file for this pattern did not include the Cactus Flower blocks in the border and therefore, the pattern had been written without them. In our attempt to correct this, we had to modify the subcutting of Fabric C1. The information in the Color Engineering is correct, having you cut a 90" strip, an 80" strip, and (16) 10" squares. However, the title for the C1b cutting graphic was missed in the review. This should say 90" instead of 80". The correction is noted to the right!

**C1b: Main Background - 90" C1b
Bags #1 & #2, Unit M, CS-2 and
CS-4 Template Layout Sheets**

Geese Migrations Corrections File

Page: 103

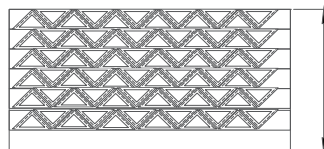
Pattern: Mediterranean Garden

Date: 04/08/2015

We skipped a step! Oops! Add this step in and then continue with directions as described in pattern!

**C3: Medium Pink -
5/8 Yd**

**Bags #4 & #5,
Template G**



C3: Template G, Bags #4 & #5:

- Cut (6) 3" x 42" strips.
- Stack into (1) stack and use a Template G from Bag #4 to cut (12) sets of (6) Template G shaped triangles.
- Group into (3) stacks of (12).

Page: 114

Pattern: Snow Birds

Date: 05/28/2015

Bag #7 color labels were switched! Oops, sorry!



Page: 133 & 134

Pattern: Southern Comfort

Date: 05/02/2015

Apparently, I forgot how to count for a minute. Sorry!

C7 Template G, Bag #4

- Cut (3) 3" x 42" strips.
- Stack and cut a total of (32) geese using Template G.
- Sort into (4) stacks of (8), clip, and place into Bag #4.

C6 & C8: Template SSL-2 & SSR-2 Layout Sheets and Template G, Bags #3 & #4

- Cut (7) 3" x 42" strips from #C6 and #C8.
- Stack by color.
- Place Template SSL-2 Layout Sheet on C6. Cut around the Template, then Cut on the Cut Lines.
- Clip and return to Bag #3.
- From the Remaining strip, Cut (32) geese using Template G from Bag #4.
- Clip into (4) groups of (8) and return to Bag #4.

Page: 133

Pattern: Southern Comfort

Date: 05/02/2015

The Cut Size for the Corner Templates should be 1/8th of an inch bigger.

C3 D: Corner Triangles (No Template), Bag #5

- From the reserved ends of the Template CS-1 Layout Sheet Rectangles above, cut (2) 5-1/8" squares. Cut along one diagonal.
- Clip together for the Border Corner Triangles and place in Bag #5.

Geese Migrations Corrections File

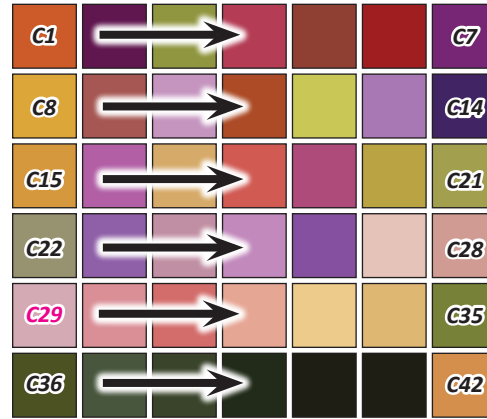
Page: 140

Pattern: The Prickly Pear

Date: 05/02/2015

Typo in the Color Swatch Graphic, plus, we probably should have put a heading on that, so I did when I issued this correction.

COLOR SWATCH GRAPHIC



Page: 155

Pattern: Spangled Star

Date: 07/23/2015

Not a real error, but a clarification as it is confusing.

Step 4: (Template SSL-2 Layout Sheet Cutting Diagram) Cut (1) 3" x 24-1/2" strip and (10) 1-1/2" x 3-1/2" rectangles per strip **from (14) strips**. Stack the strips for faster cutting. Set the 1-1/2" x 3-1/2" rectangles aside for sorting in the following section (Bags #1, #2, and #3).

Page: 170

Yardage Calculation Table

Date: 05/28/2015

The Calculation Table should have included a row under Unit DZ for Template G

UNIT	Cutting Template	a	b	c	d	e	f
UNIT DZ							
	Template DZ & G Layout Sheet		10"	4			
	Template DZ-A Layout Sheet		9 3/4"	4			
	Template G		3"	12			