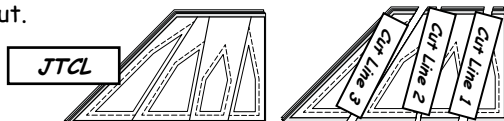


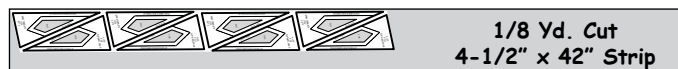
Restack the pieces into Right and Left stacks, with the pieces facing right-sides-up. Place the **Unit JTCL Background Template Layout Sheet** on top of the left stack and cut on Cut Line 1, then proceed to Cut Line 2 and so forth, until all of the Cut Lines have been cut.



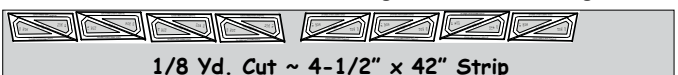
Clip the Template to each stack of fabrics and place into Bag #1. Repeat this same process using the **Unit JTCR Background Template Layout Sheet** with the right stack. Place the Unit JTCR sections into Bag #2.

Cutting Instructions, Compass Rose (Sec. 2, 4, 5, 6, 9, and 10):

1. Place each fabric strip right-side-up on the cutting table.
2. Place the templates on each fabric strip as shown in the graphics.
3. Place the template for each color in the position furthest left, cut around the template and through the fabric, then move the template to the next location on each strip and cut the next piece.
4. Sort the fabrics according to the directions below each of the following graphics.



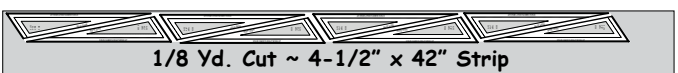
Sec. 2 ~ Cut (8) pieces using Template JTC-2. Clip together two sets of (4). Place one in Bag #1 and one in Bag #2.



Sec. 4 & 5 ~ Cut (8) pieces using Template JTC-4 and (8) pieces using Template JTC-5. Clip together two sets of (4). Place one in Bag #1 and one in Bag #2.



Sec. 6 ~ Cut (8) pieces using Template JTC-6. Clip together two sets of (4). Place one in Bag #1 and one in Bag #2.

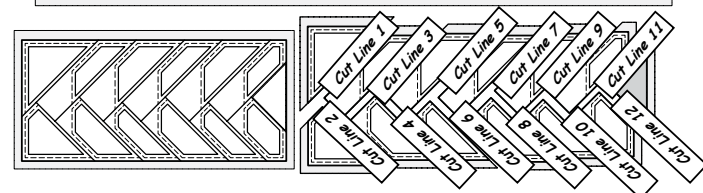
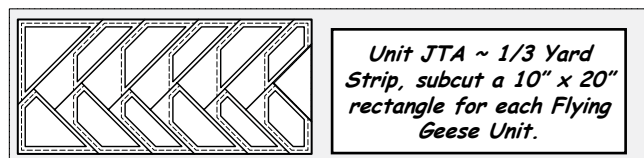


Sec. 9 ~ Cut (8) pieces using Template JTC-9. Clip together two sets of (4). Place one in Bag #1 and one in Bag #2.



Sec. 10 ~ Cut (4) pieces using Template JTC-10 from two accent fabrics. Clip together one color and place in Bag #1. Clip together the other color and place in Bag #2.

Cutting Instructions, Flying Geese Background: Place the **Unit JTA Template Layout Sheet** on the 3/8 yard fabric strip, facing right side up on your cutting table. Cut around the template layout sheet first. Then, cut the interior cut lines, in order. **Clip each section's templates and fabric together and place into Bag #3.**



Cutting Instructions (Geese): Use Template G to cut (6) geese from the 1/8 yard cut as shown in the graphic below. Clip together and place into Bag #3.



Foundation Paper Piecing: Bags #1, #2, and #3 (Graphics are shown for Unit JTCL, Only)

