

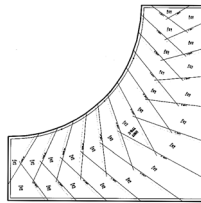
**CUTTING INSTRUCTIONS:  
COLOR #1: BAGS #5, #9,  
AND #10**

**C1 Swatch  
Box  
JN-C2906 Sepia  
4-1/2 Yards**

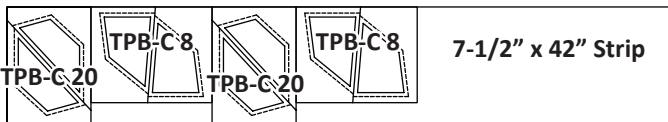
Cut the following number of strips from Color #1. These strips are used to cut the pieces for Border Spikes in Bags #9 and #10, and TP-1, in Bag #5.

- Cut (1) 7-1/2" x 42" strips (Bag #10).
- Cut (1) 8" x 42" strip (Bag #10).
- Cut (1) 9-3/4" x 42" strip (Bag #10).
- Cut (1) 7" x 42" strip (Bag #10).
- Cut (1) 8-1/4" x 42" strip (Bag #10).
- Cut (1) 9-1/2" x 42" strip (Bag #10).
- Cut (1) 7" x 42" strip (Bag #9).
- Cut (1) 8" x 42 strip (Bag #9).
- Cut (1) 9" x 42" strip (Bag #9).
- Cut (1) 11" x 42" strip (Bag #9).
- Cut (1) 15" x 42" strip (Bag #9).
- Cut (2) 13" x 42" strips (Bag #9).
- Cut (2) 11-1/2" x 42" strips (Bag #5).

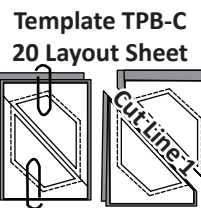
► **Bag #10, Unit TPB-C Medium  
Border Spike Template Layout  
Sheets: Color #1:**



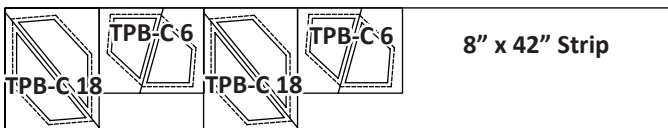
**Step 1:** From the 7-1/2" x 42" strip (Bag #10), cut (2) 7-1/2" x 5-1/2" rectangles and (2) 6-1/4" x 7-3/4" rectangles. Discard the remaining fabric and stack the rectangles, by size, *right-side-up*.



**Step 2:** Clip the *Template TPB-C 20 Layout Sheet* on the 7-1/2" x 5-1/2" rectangles (shown in the graphic to the left) and the *Template TPB-C 8 Layout Sheet* on the 6-1/4" x 7-3/4" rectangles (not shown, simply follow the same approach as shown for TPB-C 20) with paper clips over each Template on the layout sheets. Cut on Cut Line 1, for each stack, then place the clipped stacks into Bag #10.

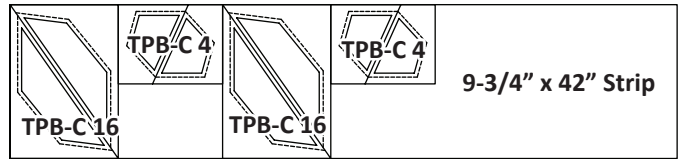


**Step 3:** From the 8" x 42" strip (Bag #10), cut (2) 8" x 6" rectangles and (2) 5-1/2" x 6-3/4" rectangles. Discard the remaining fabric and stack the rectangles, by size, *right-side-up*.



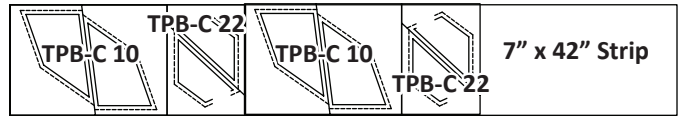
**Step 4:** Clip the *Template TPB-C 18 Layout Sheet* on the 8" x 6" rectangles and the *Template TPB-C 6 Layout Sheet* on the 5-1/2" x 6-3/4" rectangles with paper clips over each Template on the layout sheets (reference the TPB-C 20 Layout Sheet graphic as an example). Cut on Cut Line 1, for each stack, then place the clipped stacks into Bag #10.

**Step 5:** From the 9-3/4" x 42" strip (Bag #10), cut (2) 9-3/4" x 7" rectangles and (2) 5" x 6-3/4" rectangles. Discard the remaining fabric and stack the rectangles, by size, *right-side-up*.



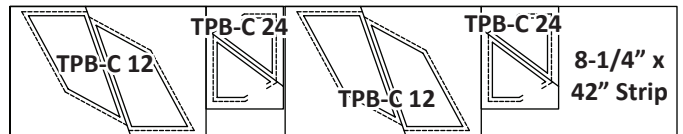
**Step 6:** Clip the *Template TPB-C 16 Layout Sheet* on the 9-3/4" x 7" rectangles and the *Template TPB-C 4 Layout Sheet* on the 5" x 6-3/4" rectangles with paper clips over each Template on the layout sheets. Cut on Cut Line 1, for each stack, then place the clipped stacks into Bag #10.

**Step 7:** From the 7" x 42" strip (Bag #10), cut (2) 7" x 10" rectangles and (2) 7" x 5" rectangles. Discard the remaining fabric and stack the rectangles, by size, *right-side-up*.



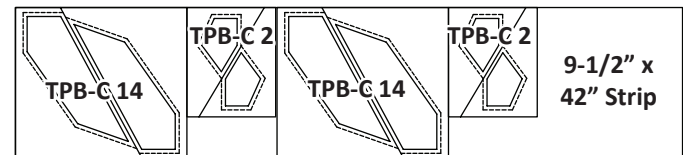
**Step 8:** Clip the *Template TPB-C 10 Layout Sheet* on the 7" x 10" rectangles and the *Template TPB-C 22 Layout Sheet* on the 7" x 5" rectangles with paper clips over each Template on the layout sheets. Cut on Cut Line 1, for each stack, then place the clipped stacks into Bag #10.

**Step 9:** From the 8-1/4" x 42" strip (Bag #10), cut (2) 8-1/4" x 12-1/2" rectangles and (2) 6-1/2" x 5" rectangles. Discard the remaining fabric and stack the rectangles, by size, *right-side-up*.



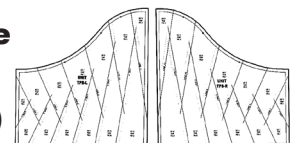
**Step 10:** Clip the *Template TPB-C 12 Layout Sheet* on the 8-1/4" x 12-1/2" rectangles and the *Template TPB-C 24 Layout Sheet* on the 6-1/2" x 5" rectangles with paper clips over each Template on the layout sheets. Cut on Cut Line 1, for each stack, then place the clipped stacks into Bag #10.

**Step 11:** From the 9-1/2" x 42" strip (Bag #10), cut (2) 9-1/2" x 11" rectangles and (2) 7" x 5-3/4" rectangles. Discard the remaining fabric and stack the rectangles, by size, *right-side-up*.



**Step 12:** Clip the *Template TPB-C 14 Layout Sheet* on the 9-1/2" x 11" rectangles and the *Template TPB-C 2 Layout Sheet* on the 7" x 5-3/4" rectangles with paper clips over each Template on the layout sheets. Cut on Cut Line 1, for each stack, then place the clipped stacks into Bag #10.

► **Bag #9, Unit TPB Med. Borde  
Spikes: Color #1:**



**Step 1:** Fold the 7" x 42" strip (Bag #9) in half and cut on the fold into (2) 7" x 21" rectangles, stacked *wrong-sides-together*.

**Step 2:** Use the *Template TPB-2 Layout Sheet* and cut six (6) parallelograms from each 21" strip. Slice the templates on the cut line to get twenty-four (24) pieces (12-Left and 12-Right). Clip