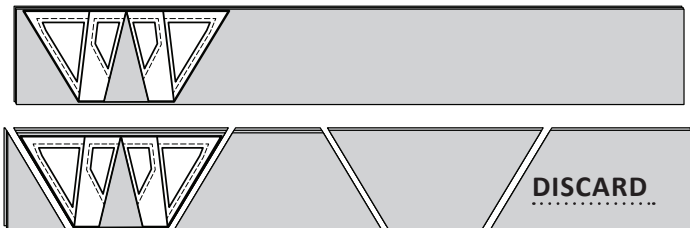
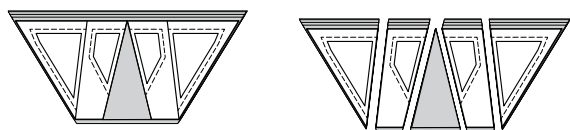


Background Fabric #CS-5: Cut (3) 6" by 42" strips.

Step 6: Position the *Unit CS Background Template Layout Sheet* in Bag #1 onto the strips and subcut (8) pieces as shown below, matching the same size and shape of the layout sheet. Discard any remaining fabric.



Step 7: Using your ruler and rotary cutter, slice through the paper and fabric on each Cut Line, following in numerical order. When your cutting is completed you should have (8) pieces cut for each template section.

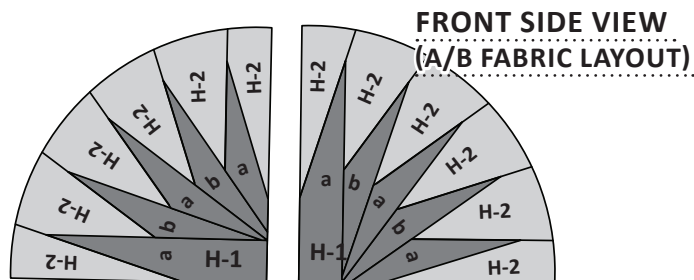


Step 8: Using a large paper clip, clip the templates and fabric pieces together and place into Bag #1.

UNIT H : BAG #2 YARDAGE CHART

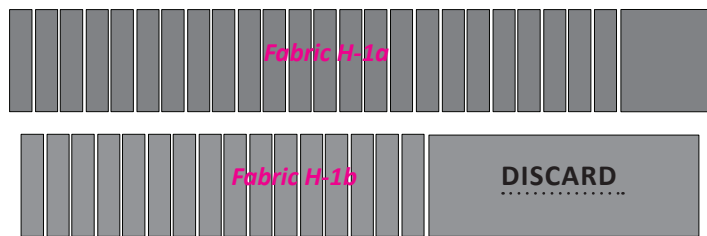
Unit H Melon Spikes		
<u>Accent Fabric #H-1a</u> Temp. H-1	<u>1/4 yd</u> (9")	JN-C2914 Thistle
<u>Accent Fabric #H-1b</u> Temp. H-1	<u>1/4 yd</u> (9")	JN-C2913 Blue
<u>Background Fabric #H-2</u> H-Layout Sheet	<u>1/2 yd</u> (18")	JN-C2907 Yellow

UNIT H: BAG #2, CUTTING INSTRUCTIONS



Accent Fabric #H-1a & #H-1b: Cut (1) 7" by 42" strip from each *Fabric H-1a & H-1b*.

Step 1: Position the *H-Spike Accent Template* in Bag #2 onto the strips and cut (24) pieces from Fabric #H-1a and (16) pieces from Fabric H-1b (graphic in next column). Clip the pieces together and place into Bag #2.

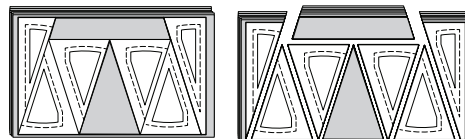


Background Fabric #H-2: Cut (2) 7" by 42" strips.

Step 2: Position the *Unit H Background Template Layout Sheet* in Bag #2 onto the strips and subcut (8) pieces as shown below, matching the same size and shape of the layout sheet.



Step 3: Slice through the paper and fabric as shown in the graphic below. When your cutting is completed you should have (8) pieces cut for each template section.



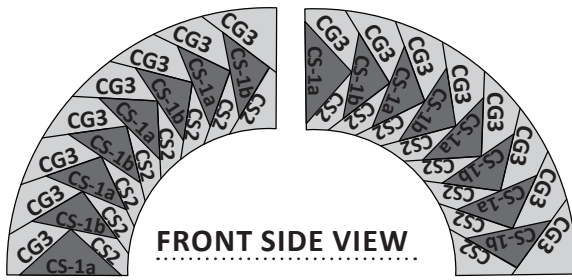
NOTE - Correction: Please forgive us as we forgot to add the layer with the cut lines to the newsprint file. This will be corrected in future printings.

Step 4: Clip the templates and fabric pieces together and place into Bag #2.

UNIT CG: BAG #3 YARDAGE

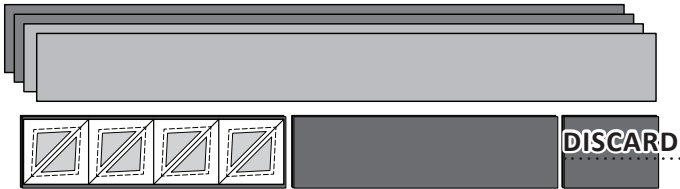
Unit CG Circling Geese		
<u>Accent Fabric #CG-1a</u> CG-1-Layout Sheet	<u>1/4 yd</u> (9")	JN-C2916 Black
<u>Accent Fabric #CG-1b</u> CG-1-Layout Sheet	<u>1/4 yd</u> (9")	JN-C2906 Charcoal
<u>Background #CG-2</u> CG-2-Layout Sheet	<u>3/8 yd</u> (13-1/2")	JN-C2907 Yellow
<u>Background #CG-2</u> CG-3-Layout Sheet	<u>1/2 yd</u> (18")	JN-C2907 Yellow

UNIT CG: BAG #3 CUTTING INSTRUCTIONS



Accent Fabric #CG-1a, & #CG-1b: Cut (2) 4-1/2" by 42" strips from each *Fabric CG-1a & CG-1b*.

Step 1: Position the *Unit CG Accent Template Layout Sheet* in Bag #3 onto the strips and subcut (8) pieces the size and shape of the layout sheet. Discard any remaining fabric.



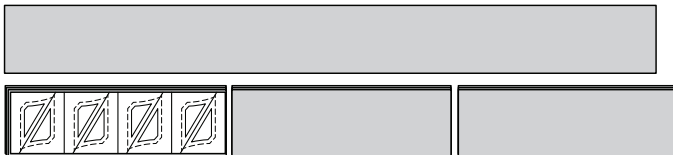
Step 2: Restack the pieces under the layout sheet, alternating the fabrics as you stack. Slice through the paper and fabric on each Cut Line, in numerical order. When your cutting is completed, you should have (8) pieces cut for each template section.



Step 3: Clip the templates and fabric pieces together and place into Bag #3.

Background Fabric #CG-2: Cut (3) 4-1/2" by 42" strips.

Step 4: Position the *Units CG-2 Background Template Layout Sheet* in Bag #3 onto the strips and subcut (8) pieces the size and shape of the layout sheet.

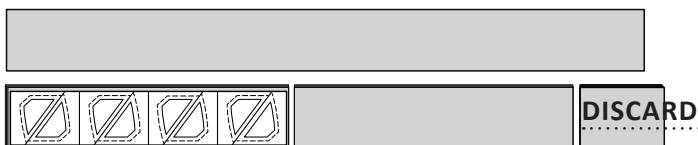


Step 5: Restack the pieces under the layout sheet, slice through the paper and fabric on each Cut Line. Clip the templates and fabric pieces together and place into Bag #3, shown above.



Background Fabric #CG-2: Cut (4) 4" by 42" strips.

Step 6: Position the *Unit CG-3 Background Template Layout Sheet* onto the strips and subcut (8) pieces.



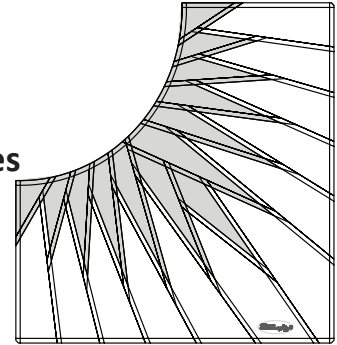
Step 7: Restack (8) pieces under the layout sheet, slice through the paper and fabric on each Cut Line. Clip the templates and fabric pieces together and place into Bag #3.



UNIT RS: BAG #4 YARDAGE

Unit RS

Revolving Spikes



FABRIC COLOR	YARDAGE	COLOR SWATCH
<u>Accent Fabric #RS-1</u> Temp. RS-1	3/8 yd (13-1/2")	JN-C2916 Black
<u>Accent Fabric #RS-2</u> Temp. RS-4, RS-5	1/2 yd (18")	JN-C2906 Charcoal
<u>Accent Fabric #RS-3</u> Temp. RS-8, RS-9	1/2 yd (18")	JN-C2916 Black
<u>Accent Fabric #RS-4</u> Temp. RS-12, RS-13	1/2 yd (18")	JN-C2910 Brown
<u>Accent Fabric #RS-5</u> Temp. RS-16, RS-17	3/8 yd (13-1/2")	JN-C2900 Tan
<u>Accent Fabric #RS-6</u> Temp. RS-20, RS-21	3/8 yd (13-1/2")	JN-C2910 Brown
<u>Accent Fabric #RS-7</u> Temp. RS-24, RS-25	1/4 yd (9")	JN-C2906 Sepia
<u>Background Fabric #RS-8</u> RS-Layout Sheet	2-3/4 yd (99")	Tonga-B3178 Moss

UNIT RS: BAG #4 CUTTING INSTRUCTIONS

Accent Fabric #RS-1: Cut (1) 11-3/4" by 42" strip.

Step 1: Position the *RS-1 Accent Template* in Bag #4, onto the strip and subcut (8) pieces. Clip the pieces together and place into Bag #1. Discard any remaining fabric.

