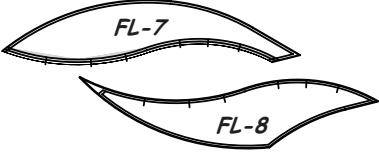


Unit FL-7 & FL-8

Full Leaf Leaf Unit FL-7 Leaf Temp FL-8		
Medium Accent Fabric #14	1/2 Yard	L2639 506-Barbados Fabric Swatch
Medium Background Fabric #15	1/2 Yard	1895 41-Aqua Fabric Swatch
Dark Accent Fabric #16	5/8 Yard	L2643 Color 230-Sapphire Fabric Swatch

Sub-Cutting, FL-7 & FL-8

Medium Accent Fabric #14:

1. Cut (2) 9" by 42" strips. Place in Bag #7 with Leaf Unit FL-7.

Medium Background Fabric #15:

1. Cut (2) 9" by 42" strips. Place in Bag #7 with Leaf Temp FL-8.

Dark Accent Fabric #16:

1. Place fabric in Bag #7 with Leaf Unit FL-7 Accent.

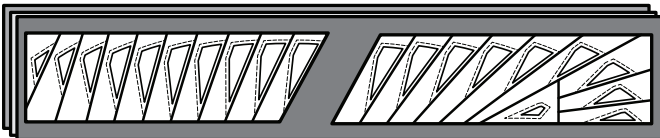
PART 2: Cutting Instructions

**Cutting Instructions: Bag #1:
Unit FL-1 Template Layout Sheets**

Step 1: Remove the (4) 6-3/4" x 42" strips cut from the (Dark) Background Fabric #1 and both *Unit FL-1 Background Template Layout Sheets* from Bag #1.



Step 2: Stack the (4) strips right-side-up and position both *Units FL-1 Background Template Layout Sheets* onto your strips.



Step 3: Placing a large paper clip along the edge of the fabric on each template section before you cut on the Cut Lines will keep the paper from moving while cutting and keep the templates and fabrics together for each section after cutting is done.

Step 4: Starting with the *Unit FL-1 Background Template Layout Sheets* (odd sections 21-39), cut on **Cut Line 1**, proceed in order to **Cut Line 10**. On the second layout sheet (odd sections 1-19), continue with **Cut Line 11** through **Cut Line 19**.



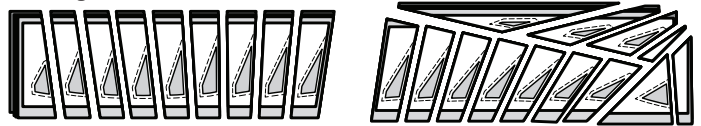
Step 5: Re-stack the pieces in numerical order and place back into Bag #1. A large binder clip can be used to keep the sections stacked together.

Step 6: Remove the (4) 7-1/2" x 42" strips cut from the (Light) Accent Fabric #2 and both *Unit FL-1 Accent Template Layout Sheets*. The fabric strips are stacked right-side-up with the layout sheet positioned on the strips as shown. Paperclips are placed along the edge of the fabric on each section to hold the paper and section together before you begin cutting.

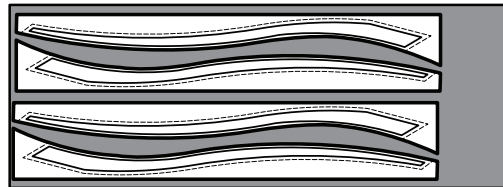


Step 7: Starting with the *Unit FL-1 Accent Template Layout Sheet* (even sections 22-38), cut on **Cut Line 1**, proceed in order to **Cut Line 8**. On the second layout sheet (even sections 2-20 & 40), continue with **Cut Line 1**, proceeding, in order, to **Cut Line 12**.

Step 8: Re-stack the pieces in numerical order and place back into Bag #1.



Step 9: Remove the *FL-1 Leaf Vein Template* with the Dark Accent Fabric #3. Position the template as shown onto the right-side of the fabric and cut (4) pieces. Only one template was provided so you will need to reposition the template after each cut.



Step 10: Place the pieces back into Bag #1.

**Cutting Instructions: Bag #2:
Unit FL-2 Template Layout Sheets**

Step 1: Remove the (4) 6-3/4" x 42" strips cut from the (Dark) Background Fabric #1 and both *Units FL-2 Background Template Layout Sheets* from Bag #2.

Step 2: Stack the (4) strips right-side-up and position the *Unit FL-2 Background Template Layout Sheets* onto the strips.



Step 3: Place a large paper clip along the edge of the fabric on each template section to keep the paper and fabrics together for each section during and after cutting.

Step 4: Start cutting on **Cut Line 1**, and proceed, in order to **Cut Line 13**. On the second layout sheet (sections 28-31), continue and cut on **Cut Lines 1-3**.



Step 5: Re-stack the pieces in numerical order and place back into Bag #2. A large binder clip can be used to keep the sections stacked together.