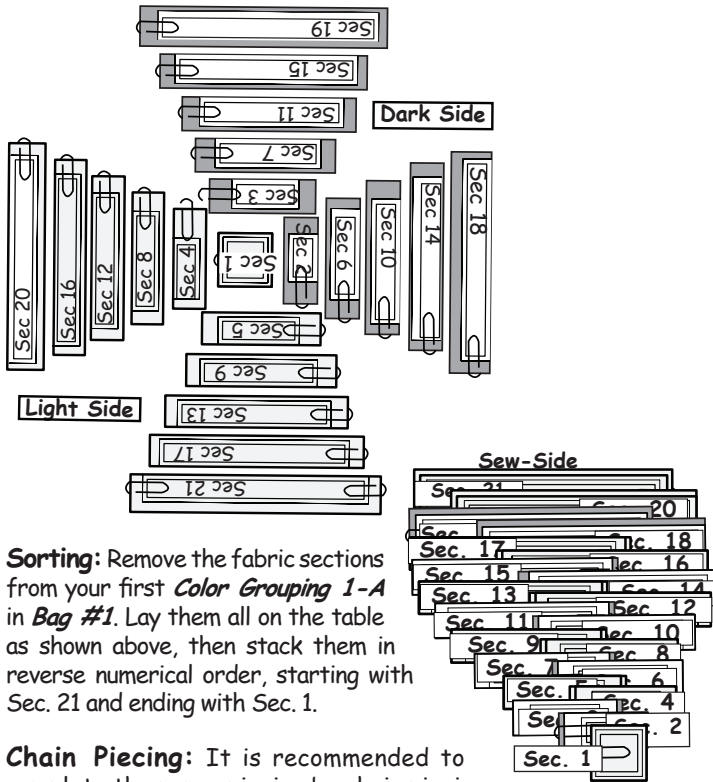


1. The fabric pieces may have been positioned incorrectly before sewing it onto the foundation paper.
2. You may have cut the fabric pieces incorrectly by cutting it too narrow.
3. You may have forgotten to fold and trim the quarter-inch seam allowance along the sew-side of the fabric, previously sewn onto the foundation papers before adding the next strip.

Whatever the reason, remember, mistakes can be corrected.

Removing the Foundation Paper: Do not remove any foundation paper until the instructions tell you to do so.

Log Cabin Blocks, Stacking and Sorting for Foundation Paper Piecing



Sorting: Remove the fabric sections from your first *Color Grouping 1-A* in *Bag #1*. Lay them all on the table as shown above, then stack them in reverse numerical order, starting with Sec. 21 and ending with Sec. 1.

Chain Piecing: It is recommended to complete the paper piecing by chain piecing the foundation Units in groupings previously stacked in each bag. Read each step as you work through the first set of papers. This will keep you from jumping ahead and making mistakes.

Sorting the Foundation Papers: There are (12) each LC Units, (1) HLC-B Unit and (1) HLC-A Unit in each bag. All three units are sewn with the Log Cabin strip sets.

When working with the HLC-B, & HLC-A pay attention to the *section #'s* on the foundation papers along with the writing that reads 'Use Strips for Temp Sec. #'. The HLC-B, & HLC-A units were designed as partial blocks to off-set each of the vertical rows. On the partial units some of the section #'s were removed to shorten the units, however the rotation of the fabric must remain the same as if they were full blocks. This means some strips will need to be discarded during the piecing process to assure the correct color is sewn to the foundation unit.

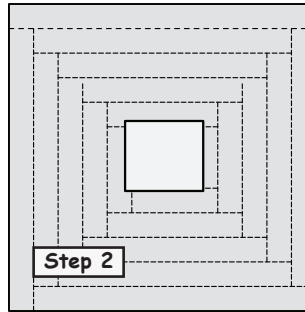
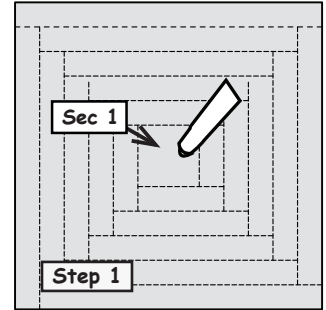
Before you begin the paper piecing, number the papers 1-7 for each color group, paper #7 being a partial unit. Placing (1) partial unit on the bottom of each stack will make it easier to keep track of your fabric as you discard the unused fabric strips.

Log Cabin, Foundation Paper Piecing

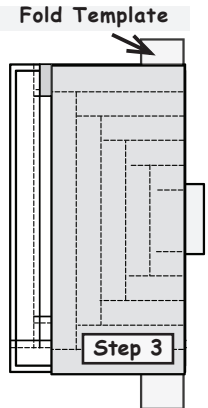
Start with Bag #1, finish with Bag #3.

Note: If you are new to foundation paper piecing, turn the foundation paper over and trace the dashed lines on the backside of your first piece.

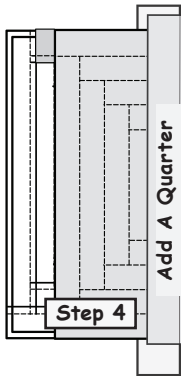
Step 1: Place a small amount of fabric glue on the backside of the foundation paper under Sec. 1.



Step 2: Glue the wrong-side of the first fabric piece to the backside of the paper under section 1.

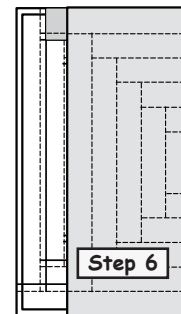
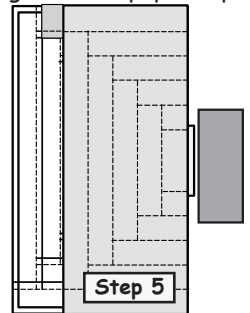


Step 3: Place the fold template over the top of Sec. 1, lining the edge up to Line 1. Fold the paper back over the fold template.



Step 4: Place the *Add-A-Quarter* ruler next to the folded edge on the paper, lip-side down, and trim a quarter-inch seam.

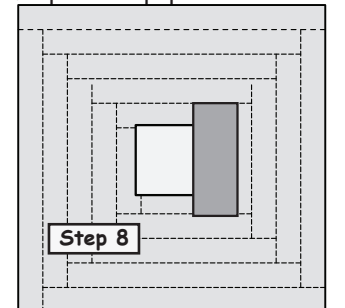
Step 5: Place the second piece of fabric for Sec. 2 right-side-up next to the folded back paper as shown.



Step 6: Lift the foundation paper and slide the second fabric piece under Sec. 2. Line the edge of the second fabric up with the trimmed quarter-inch seam.

Step 7: Lift both pieces to your machine with the paper. Open the paper and sew on

Line 1. Start sewing a few stitches before the beginning of Line 1 and sew to the end of Line 1 stopping a few stitches past the dashed quarter-inch line.



Step 8: Loosen the glue under Sec. 1, then flip the paper over and press the fabric pieces to the open position.