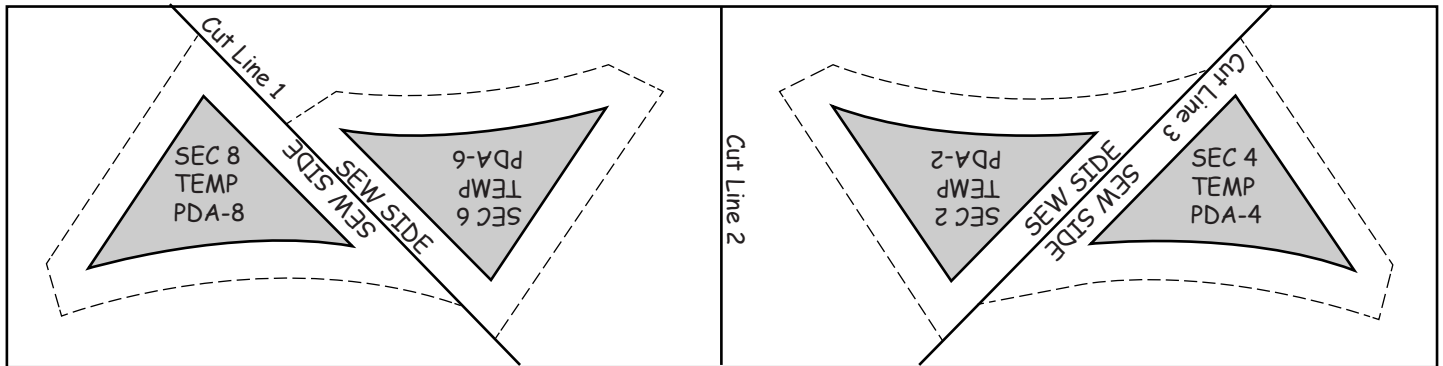


Quiltworx by Judy Niemeyer

Incorrect Unit PDA Template Layout Sheet



The PDA unit was labelled incorrectly in the original printing of the pattern. If you happened to receive one of these patterns, you need to open up Template Layout Sheet TP-81, find the shaded PDA templates with the EVEN numbers on them and do the following:

- Cross Out "8" and Write "4"
- Cross Out "6" and Write "2"
- Cross Out "2" and Write "6"
- Cross Out "4" and Write "8"

All associated graphics and foundation paper units are labeled correctly, so there is no need to change anything else!

We apologize for the error!

~ Sincerely, Quiltworx.com

Corrected Unit PDA Template Layout Sheet February 2013

