

## Templates

**Paper Piecing Template** are oversized templates, with extra seam allowances designed for each section on the foundation paper. The extra room is needed when you position the fabric under the foundation paper. After the fabric is sewn onto the foundation paper, the excess fabric is trimmed away using your Add-A-Quarter ruler. You will find the templates printed on the newsprint along with the foundation papers.

### Template Layout Sheets

**Template Layout Sheets:** A template layout sheet is made by grouping together several paper piecing templates to be cut at one time. The templates are arranged to fit on one large sheet of paper to utilize grain line, save fabric and speed up the cutting process.

Template layout sheets are used to cut out the individual fabric pieces for each section on any given foundation unit. The template layout sheets are positioned onto a stack of fabric. Then your rotary cutter is used to slice through the paper and fabric, allowing several layers of fabric to be cut at one time. Again you will find the template layout sheets printed on the newsprint with the foundation papers.

We have provided you with both paper piecing templates and template layout sheets. The fabric strips can be cut with the template layout sheets or the paper piecing templates.

### Setting up your Bags

Two bags are needed to keep the foundation papers, templates and template layout sheets separated for the **Center Block Units** and **Border Unit**. The Bag # are listed below for the different parts.

### Foundation Papers.

**Foundation Papers:** The foundation papers are cut out by trimming the excess paper away, approximately 1/8" beyond the outside cutting line. Trimming off the excess paper will make it easier to position and sew the fabric pieces onto the foundation papers.

- Unit-CB, Place these papers with Bag #1.*
- Units-DL & DR, Place these papers with Bag #2.*
- Unit-CP, Place these papers with Bag #2.*

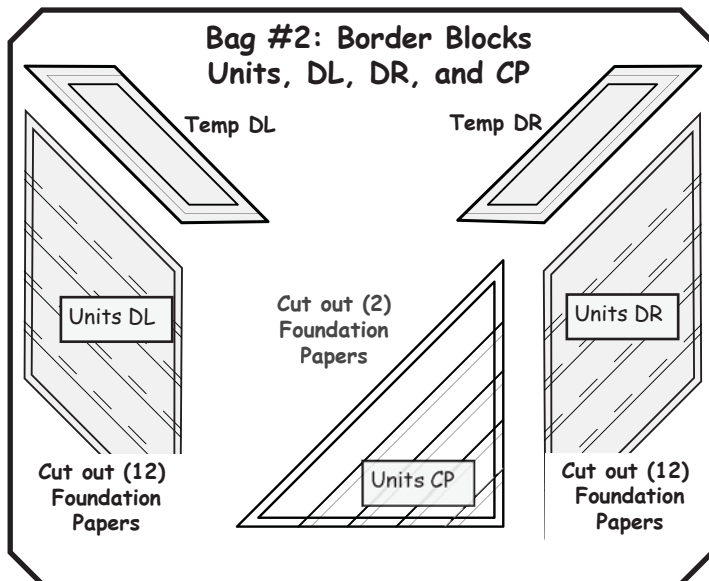
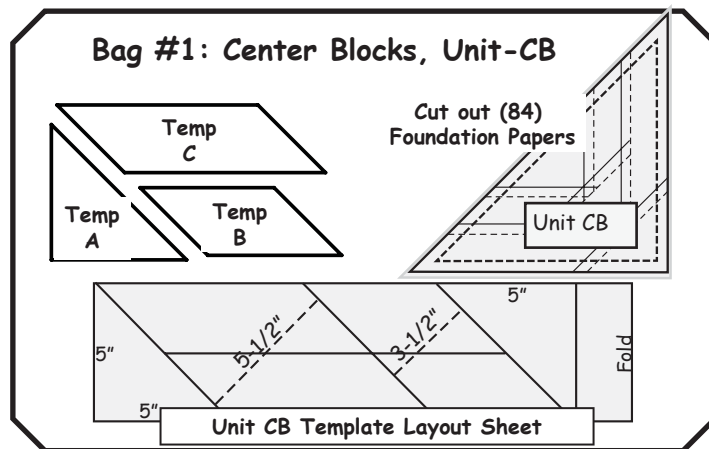
### Templates and Template Layout Sheets

The templates and template layout sheets are cut out on the solid line that forms a boundary around each group of templates.

- Unit-CB Template Layout Sheets: Bag #1*
- Template A: Bag #1, Sections 1, 4, & 7, Unit-CB.*
- Template B: Bag #1, Sections 2, & 3, Unit-CB.*
- Template C: Bag #1, Sections 5 & 6, Unit-CB.*
- Templates DL & DR: Bag #2,*

**Templates:** If you plan to use Templates A, B, & C to cut your fabric strips, you may want to adhere them onto a sheet of template plastic to preserve the longevity of their use.

**Unit-CB Template Layout Sheets:** If you use the template layout sheets do not glue them onto the template plastic. They are used as a paper template which requires you to cut through the paper with your rotary cutter.



### Cutting your Fabrics

*Note: These instruction were designed to use 5" by 42" fabric strips. If your strips are not at least 40" wide you will need to make some adjustments to the cutting instructions. If you choose to use fat-quarters you will need to make provisions for the third triangle on each unit, as the formula for our cutting instruction is not conducive to working with fat-quarters.*

- Cut (1) 5" by 42" strip from (21) light fabrics.*
- Cut (1) 5" by 42" strip from (21) dark fabrics.*

The strips are cut across the salvage grain. Place your light strips together in one group and your dark strips together in another. The strips are sorted by value from the lightest to the darkest in each group, then divided into (3) stacks.

*Note: The number of strips placed in each stack is up to you. The size of your rotary cutter and the strength in your arm will be your determining factor of how many strips you cut at one time.*

On the following page we are including two options for cutting. Both options are very easy to follow.

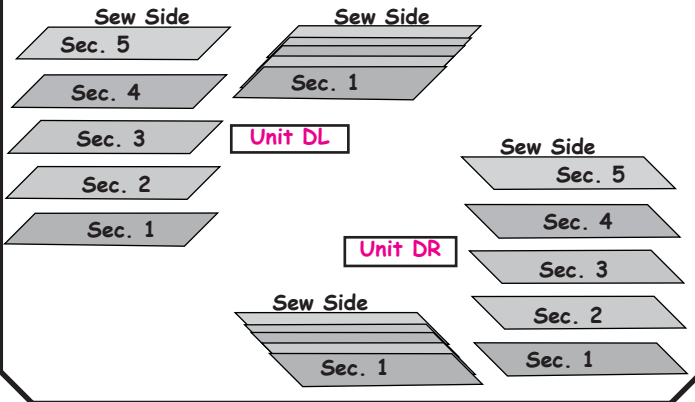
**Option 1:** Shows how to cut the strips using the **Unit-CB Template Layout Sheet**.

**Option 2:**

Shows how to cut the strips using **Templates A, B, & C**. The templates are used if you run out of template layout sheets.

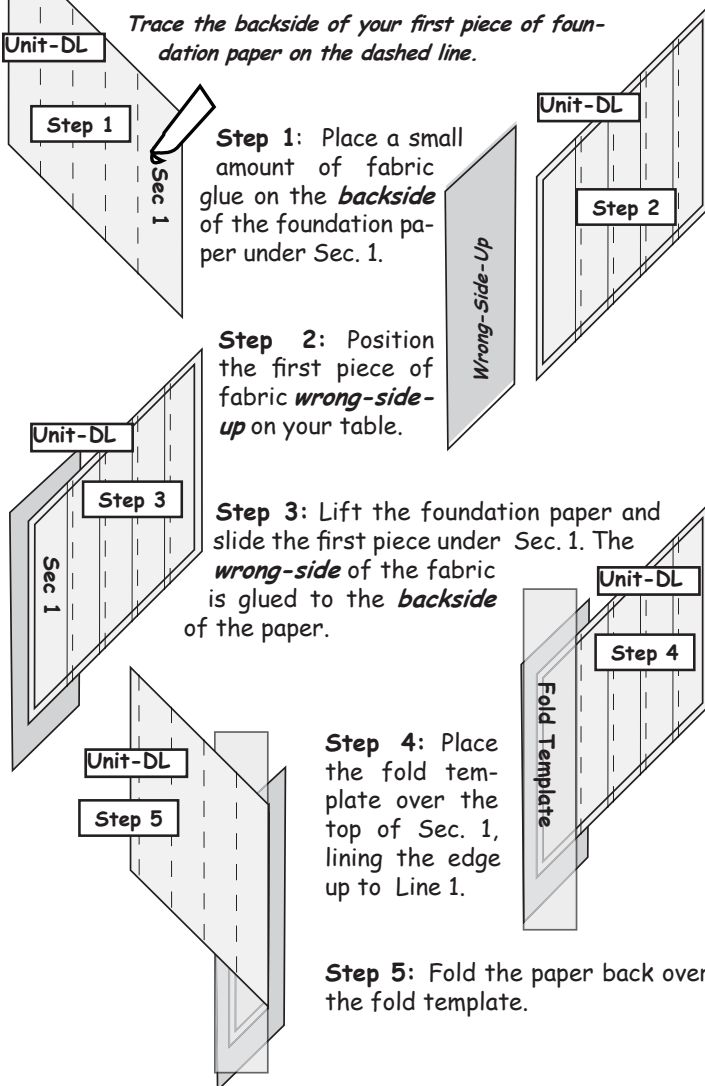
## Unit-DL & DR, Bag #2 Preparing and Stacking the Fabrics For Foundation Paper Piecing

**Special Hints for Stacking the Templates:** The fabric pieces for each unit are grouped and stacked together facing *right-side-up* in descending order, starting with the last piece for Sec 5 on the bottom and ending with the first piece for Sec 1 on the top. The sew-sides are aligned at the top in each stack as shown.



### Foundation Paper Piecing, Unit-DL & DR

Trace the backside of your first piece of foundation paper on the dashed line.



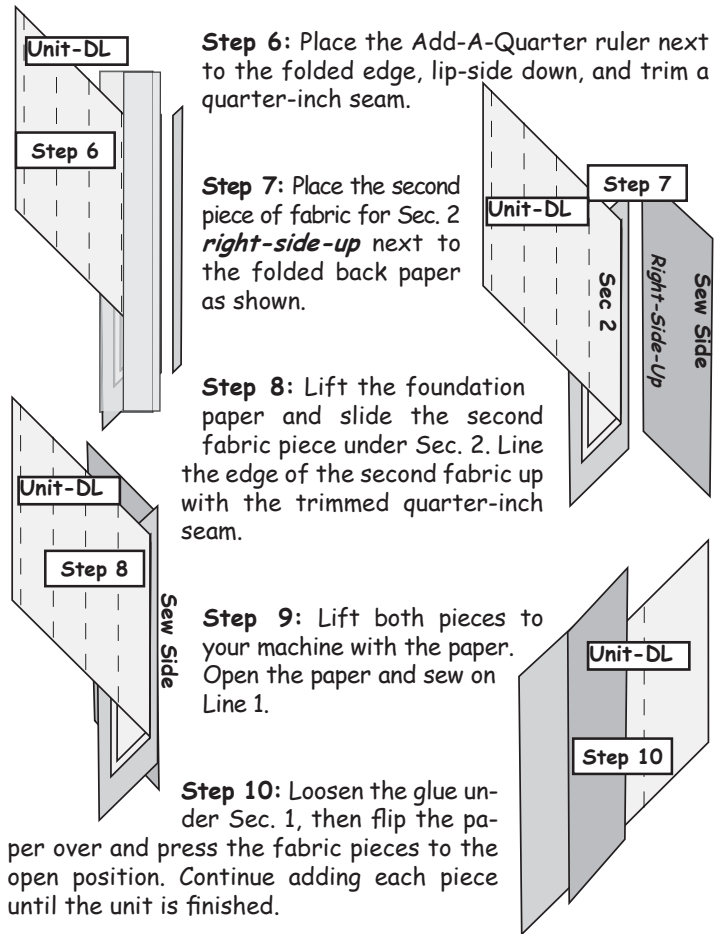
**Step 1:** Place a small amount of fabric glue on the *backside* of the foundation paper under Sec. 1.

**Step 2:** Position the first piece of fabric *wrong-side-up* on your table.

**Step 3:** Lift the foundation paper and slide the first piece under Sec. 1. The *wrong-side* of the fabric is glued to the *backside* of the paper.

**Step 4:** Place the fold template over the top of Sec. 1, lining the edge up to Line 1.

**Step 5:** Fold the paper back over the fold template.



**Step 6:** Place the Add-A-Quarter ruler next to the folded edge, lip-side down, and trim a quarter-inch seam.

**Step 7:** Place the second piece of fabric for Sec. 2 *right-side-up* next to the folded back paper as shown.

**Step 8:** Lift the foundation paper and slide the second fabric piece under Sec. 2. Line the edge of the second fabric up with the trimmed quarter-inch seam.

**Step 9:** Lift both pieces to your machine with the paper. Open the paper and sew on Line 1.

**Step 10:** Loosen the glue under Sec. 1, then flip the paper over and press the fabric pieces to the open position. Continue adding each piece until the unit is finished.

Complete the foundation piecing on each of the DL-Units. When all the foundation piecing is finished, trim the excess paper and fabric off from around the edge of the paper. The trim line is the solid line on the outer edge of the foundation paper.

Return to the beginning of Step 1 and complete the DR-Units. Remember the DR-Units are a mirror image so the graphics will appear to be backwards.

Do not remove the foundation papers on the border units. The paper will provide stability to the border pieces keeping them from stretching when sewing them onto the quilt.

### Foundation Piecing the CP-Units

The CP Units are pieced with the fabric strips previously cut on page 8 in Step 7.

If you need help getting started refer back to Steps 1-10 above.

A basting stitch should be sewn along the edges of each corner units. This will keep the bias edges from stretching as you work on your quilt.