

Cutting Instructions

Unit-B: Accent Fabric #A-2 through #A-6

Five (5) accent fabrics are used to cut the pieces for the floating geese triangles. Each color is used one (1) time on each foundation unit.

Note: If you plan to use more or less than five (5) fabrics make sure you cut (40) triangles for the geese.

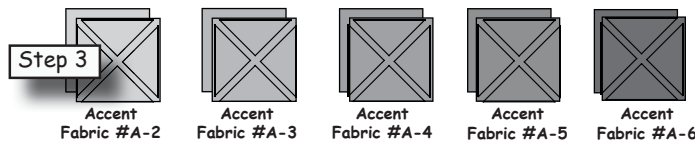
Step 1: Cut one (1) 6" by 42" strip, selvage to selvage, from each of the five (5) fabrics. A total of five (5) strips are needed.



Step 2: Sub-cut two (2) 6" squares from each color.



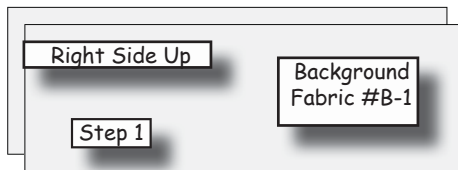
Step 3: Separate the pieces by color into five (5) stacks. Then crosscut the squares diagonally into four (4) quarter-square triangles. You will end up with (8) triangles from each color.



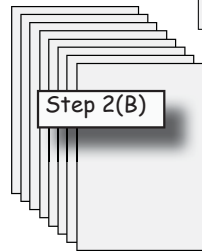
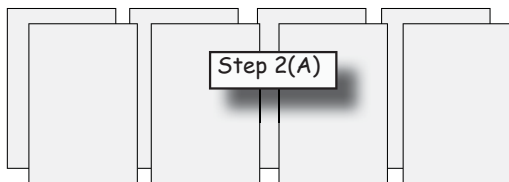
4: Clip the pieces together in each color group and set them aside.

Unit-B: Background Fabric #B-1

Step 1: Cut two (2) 15" by 42" strips. Open and re-stack the strips *right-side-up*.



Step 2: (A). Sub-cut each strip into four (4) 9" by 15" rectangles for a total of eight (8) rectangles.



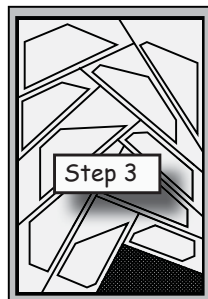
(B) Stack the eight (8) pieces together facing *right-side-up*.

Note: When stacking your pieces, keep the pieces evenly matched along the edges.

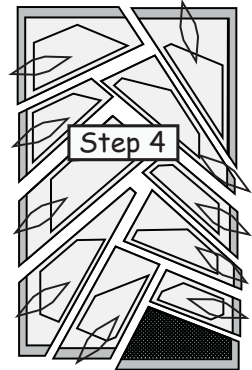
Step 3: Position the Unit-B Template Layout Sheet onto the (8) fabrics in your stack.

Note: You will find the template layout sheets are not the same size as the fabric pieces.

**Refer back to the General Instructions Booklet for an explanation.*



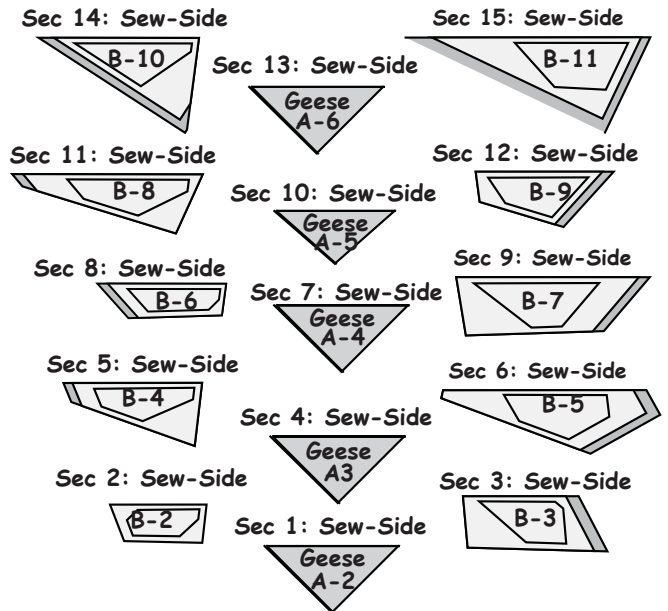
Step 4: Large paper clips can be used to hold the templates onto the fabric pieces. Adding the paper clips before cutting the template layout sheets apart is more time efficient.



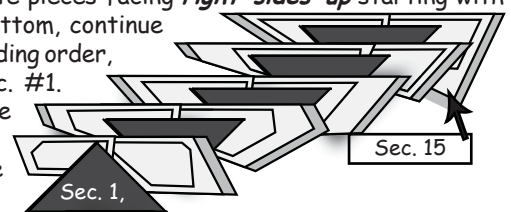
Step 5: Slice through the paper and fabric on Lines 1-10 in numerical order, to separate each section.

Preparing and Stacking the Fabrics Unit-B: Foundation Paper Piecing

Arrange the templates as shown in the layout below before you stack for the foundation paper piecing.



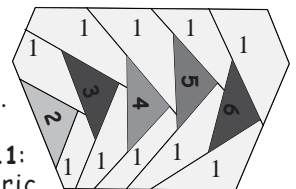
Stack the template pieces facing *right-sides-up* starting with Sec. 15 on the bottom, continue stacking in descending order, finishing with Sec. #1. The sew-sides are aligned at the top as you stack the pieces.



Note: Sec. 1 is positioned wrong-side-up on the top of your pile.

Foundation Paper Piecing: Unit-B: Make (8) Units.

Geese: Accent Fabrics #2, 3, 4, 5, & 6.



Temp B-2 thru B-11: Background Fabric #B-1

Step 1: Trace the *dashed* lines on the backside of each paper.



Step 2: Find Sec. 1, then place a small amount of fabric glue under Sec. 1 on the *backside* of the paper.

