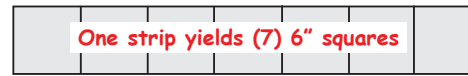


## Cutting Instructions, Part 1:

### Color Family #1, Black (Print) Fabric #1:

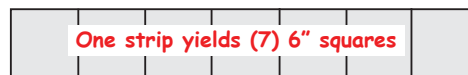
1: Cut (3) 6" by 42" strips. Sub-cut (20) 6" squares. Clip the pieces together with a binder clip and place them into Bag #2 with Template CG-1.



2: Cut (1) 11" by 42" strip. Place this strip into Bag #4 with Template #1.

### Color Family #1, Black (Print) Fabric #2:

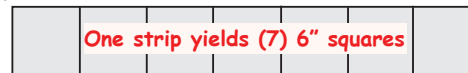
1: Cut (3) 6" by 42" strips. Sub-cut (20) 6" squares. Clip the pieces together with a binder clip and place them into Bag #2 with Template CG-1.



2: Cut (1) 11" by 42" strip. Place this strip into Bag #4 with Template #1.

### Color Family #1, Black (Print) Fabric #3:

1: Cut (3) 6" by 42" strips. Sub-cut (20) 6" squares. Clip the pieces together with a binder clip and place them into Bag #2 with Template CG-1.



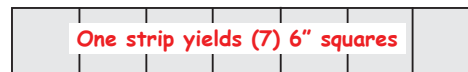
2: Cut (1) 11" by 42" strip. Place this strip into Bag #4 with Template #1.

3: Cut (2) 7-1/2" by 42" strips. Sub-cut (48) 1-1/2" by 7-1/2" pieces. Place (8) pieces into Bag #3, for the CGM-4 Spikes. Place the other (40) pieces into Bag #1, for the Unit-H Spikes.



### Color Family #1, Black (Print) Fabric #4:

1: Cut (3) 6" by 42" strips. Sub-cut (20) 6" squares. Clip the pieces together with a binder clip and place them into Bag #2 with Template CG-1.

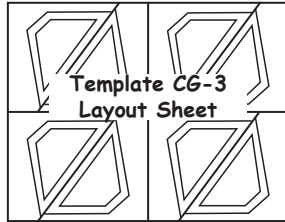
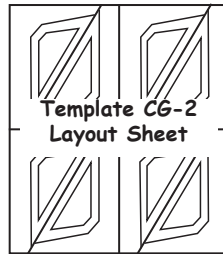


2: Cut (1) 11" by 42" strip. Place this strip into Bag #4 with Template #1.

3: Cut (2) 7-1/2" by 42" strips. Sub-cut (48) 1-1/2" by 7-1/2" pieces. Place (8) pieces into Bag #3, for the CGM-4 Spikes. Place the other (40) pieces into Bag #1, for the Unit-H Spikes.

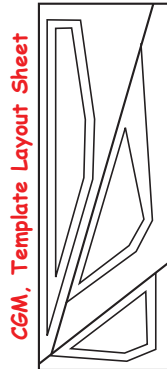


The *Template CG-2, Layout Sheet* is used to cut the background pieces for sections 2, 5, 8, 11, 14, 17, 20, & 23 on the CG-Unit. Cut out (4) layout sheets and place them into Bag #2.



The *Template CG-3, Layout Sheet* is used to cut the background pieces for sections 3, 6, 9, 12, 15, 18, 21, & 24 on the CG-Unit. Cut out (4) layout sheets and place them into Bag #2.

The *CGM, Template Layout Sheet* is used to cut the background pieces for sections 1, 3, 5, 7, 9, & 11 on the CGM-Unit. Cut out (2) layout sheets and place them into Bag #3.



*Note: Template pieces were not provided for the Unit-H spikes or the CGM-4 spikes. These pieces are cut using measurements provide in the cutting instructions.*

## Selecting Fabrics

To create the same color format shown on the cover sheet, follow the color information provide below for each (4) color family.

Color Family #1: (4) Black Printed Fabrics, (Black light).

Color Family #2: (3) Black Tone on Tone Fabrics, (Raven).

Color Family #3: (1) Dark-Medium Teal Fabric, (Watercress).  
(1) Light-Medium Teal Fabric, (Swordfish).

Color Family #4: (2) Light Green Fabrics, (Montego).  
(1) Light Green Fabric (Mint).

After selecting your fabrics, cut and paste a small piece from each fabric on the color chart shown on page 15.

*Note: Changing the colors in each color family will not impact the cutting instructions, however changing the number of fabrics in each color group will impact the cutting instructions. If you decide to change the number of fabrics in each color family you will need to recalculated the yardage and cutting instructions.*

## General Cutting Information

**Fabric Width:** The yardage amounts and cutting instructions were calculated to use 42" wide fabrics. If your fabrics are not 42" wide, you may need to recalculate the yardage.

The cutting instructions are separated into two parts.

**Part 1:** In *Part 1*, you will be cutting the fabric pieces that are used to complete the cutting in Part 2. Graphics for each Color Family have been included as a visual guide to you with the sub-cutting for each of your strips.

**Part 2:** In *Part 2*, you will be using the Templates and Template Layout Sheets to cut the fabric strips into the pieces needed to complete your quilt.

# Celtic Wave 70" by 70"

## Yardage Requirements

Designers  
Judy and Brad Niemeyer

Inventory No.  
JNQ 81P

Unit H: Unit CG  
Unit CGM  
TP-40 TP-41

### Color Family #1: Fabrics 1, 2, 3, & 4:

These fabrics are used for the center background, geese, and spikes. Choose (4) dark fabrics from the same Color Family blending texture, and value.

<b>Fabrics #1:</b>	1 Yard,	<i>Black Print, Center Background pieces, and Geese,</i>
<b>Fabrics #2:</b>	1 Yard,	<i>Black Print, Center Background pieces, and Geese,</i>
<b>Fabrics #3:</b>	1-1/2 Yards,	<i>Black Print, Center Background pieces, Geese, and Spikes,</i>
<b>Fabrics #4:</b>	1-1/2 Yards,	<i>Black Print, Center Background pieces, Geese, and Spikes,</i>

### Color Family #2: Fabrics #5, #6, & #7:

These fabrics are used for the spikes. Choose (3) dark fabrics to compliment Fabric #s, 3, & 4 in Color Family #1.

<b>Fabrics #5:</b>	1/2 Yard,	<i>Black Tone on Tone, Spikes,</i>
<b>Fabrics #6:</b>	1/2 Yard,	<i>Black Tone on Tone, Spikes,</i>
<b>Fabrics #7:</b>	1/2 Yard,	<i>Black Tone on Tone, Spikes,</i>

### Color Family #3: Fabrics #8 & #9:

These fabrics are the accent fabrics bordering the circling geese.

Fabric #8 is a light medium textured fabric that separates the dark background fabrics in Color Family #1, from the geese.  
Fabric #9 is a dark medium textured fabric that separates the light background fabrics in Color Family #4, from the geese.

<b>Fabrics #8:</b>	1 Yard,	<i>Medium-Light Teal, Outside Border for the Geese</i>
<b>Fabrics #9:</b>	1-1/2 Yard,	<i>Medium-Dark Teal, Outside Border for the Geese</i>

### Color Family #4: Fabric #10, #11, & #12:

These fabrics are the light background fabrics. Choose (3) light fabrics from the same color family.

Fabrics #10 & #11 are the small textured fabrics used between the spikes and the geese.

Fabric #12 is a light mottled batik used to border the outer edge of the quilt.

<b>Fabrics #10:</b>	2 Yards,	<i>Light Green Background Fabric.</i>
<b>Fabrics #11:</b>	3 Yards,	<i>Light Green Background Fabric.</i>
<b>Fabrics #12:</b>	2-1/2 Yards	<i>Light Green Finishing Border Background.</i>

**Backing 4-1/4 Yds    Binding 1 Yd    90" wide Hobbs 80/20, Batting 2-1/4 Yds**

Extra foundation papers can be purchased for the queen size quilt shown on the cover. The extra foundation package will include enough foundation papers when used with this package to make the 90" by 90" quilt, along with the yardage and cutting information needed to complete the quilt.

*Judy Niemeyer Quilting*

444 Margrethe Rd Kalispell MT 59901

Po Box 5264 Kalispell MT 59903

Email: [judy@quiltworx.com](mailto:judy@quiltworx.com) web page: [www.quiltworx.com](http://www.quiltworx.com)



Celtic Waves Pattern Only